

DRAFT

Surface Treatments



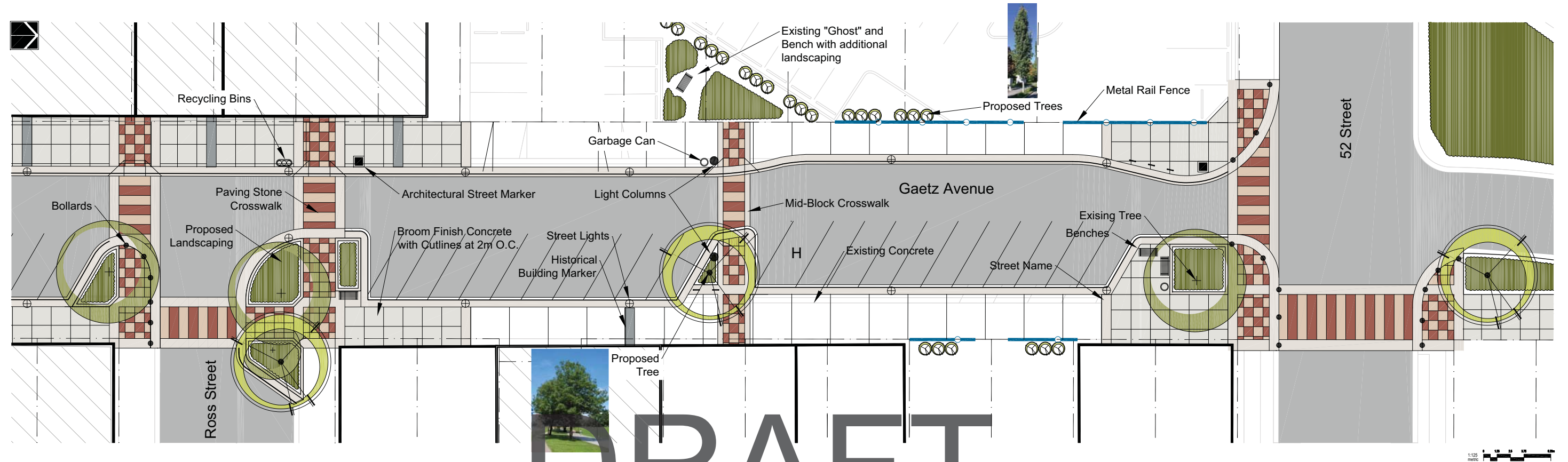
Looking South at the corner of Gaetz and 52 Street



Sidewalks can be important character defining element if they are highlighted through design. The use of surface treatments should reflect the aesthetics of the Gaetz Avenue and provide continuity along the pedestrian corridor.

The use of red and tan paving stone and saw cut concrete highlights street corners and creates a cohesive design aesthetic.

The incorporation of inlaid street names and information about historical buildings creates interest at the pedestrian scale. These are used throughout the design of Gaetz Avenue



DRAFT

Landscaping

Well designed plantings can brighten up dull streets and provide a sense of visible stewardship to discourages undesirable activities and vandalism. Plantings schemes will be designed using "Crime Prevention Through Environmental Design" (CPTED) principles. Planting curbs will be designed to discourage sitting.

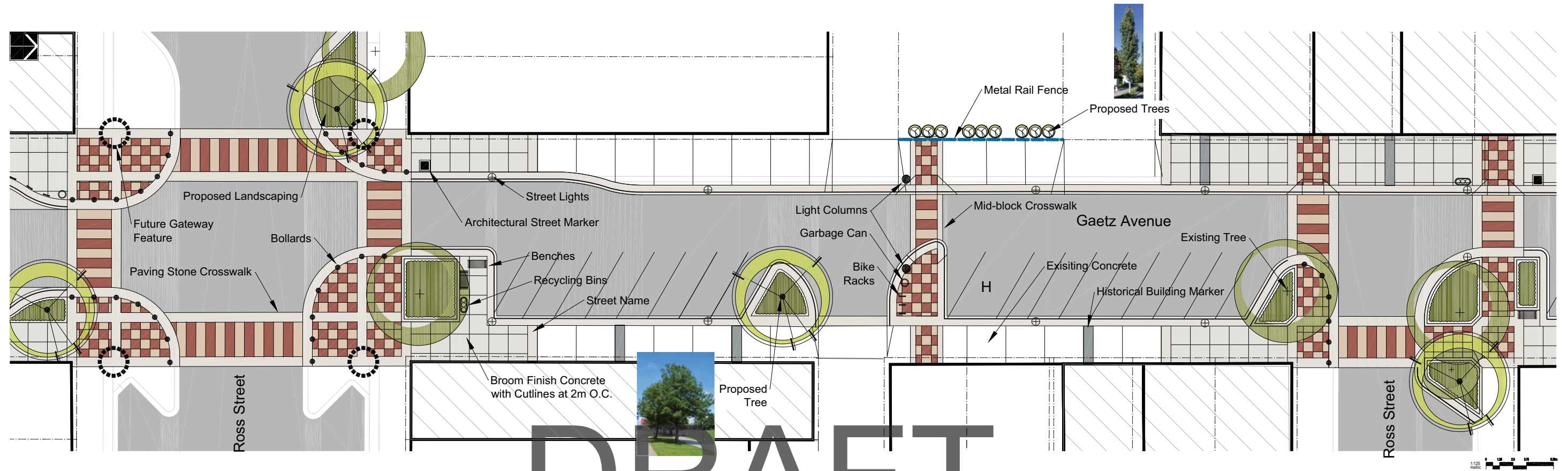
Landscaping spaces have been designed to allow for the addition of street trees of the same species. Perennial and shrub plantings will include species such as daylilies, barberries, bergenia, ornamental grasses and ornamental groundcovers. Plant species selected will be no taller than 900mm and focus on adding texture and color to the street.



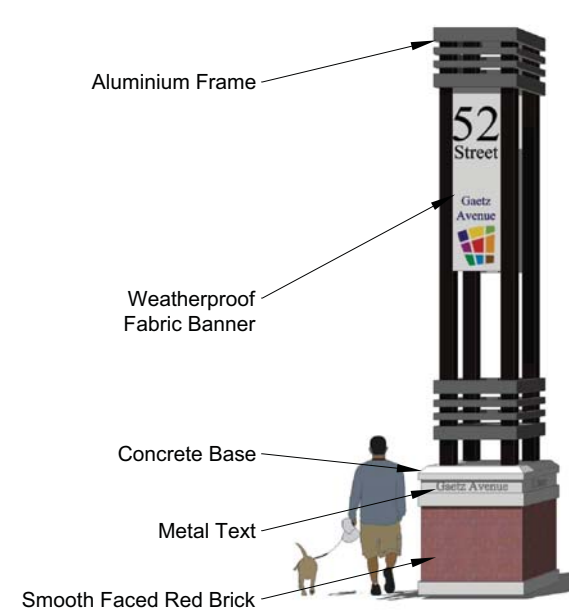
Looking South at the corner of Gaetz and 51 Street



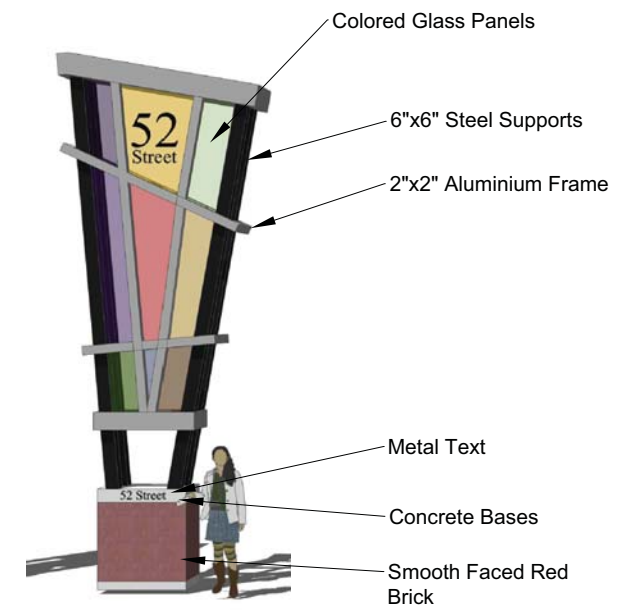
Planting Bed Curb Detail



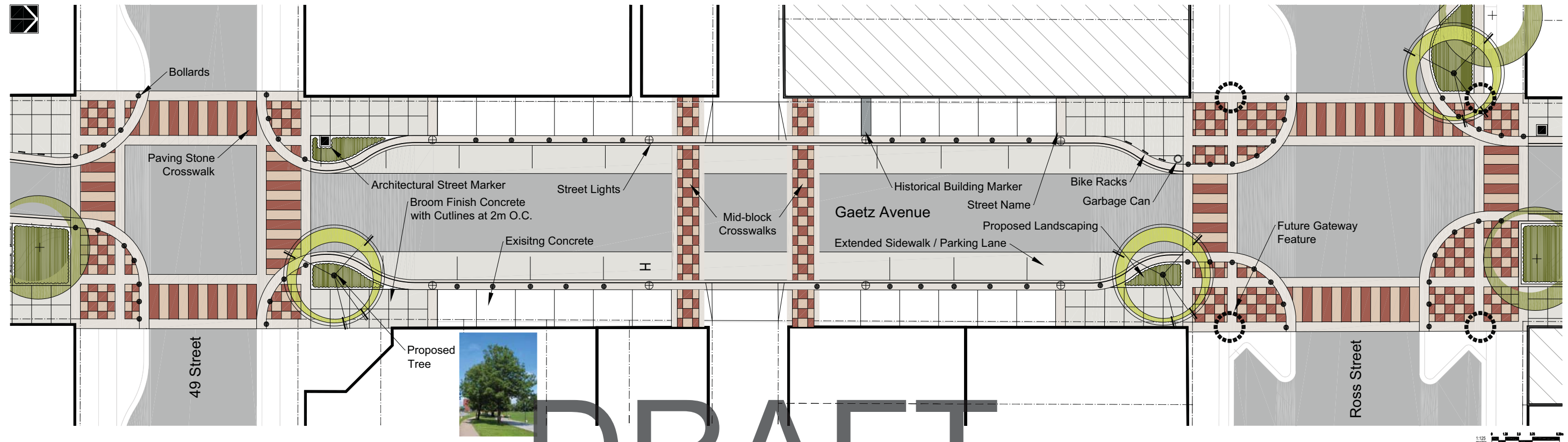
Looking south at the intersection of Gaetz and Ross Street



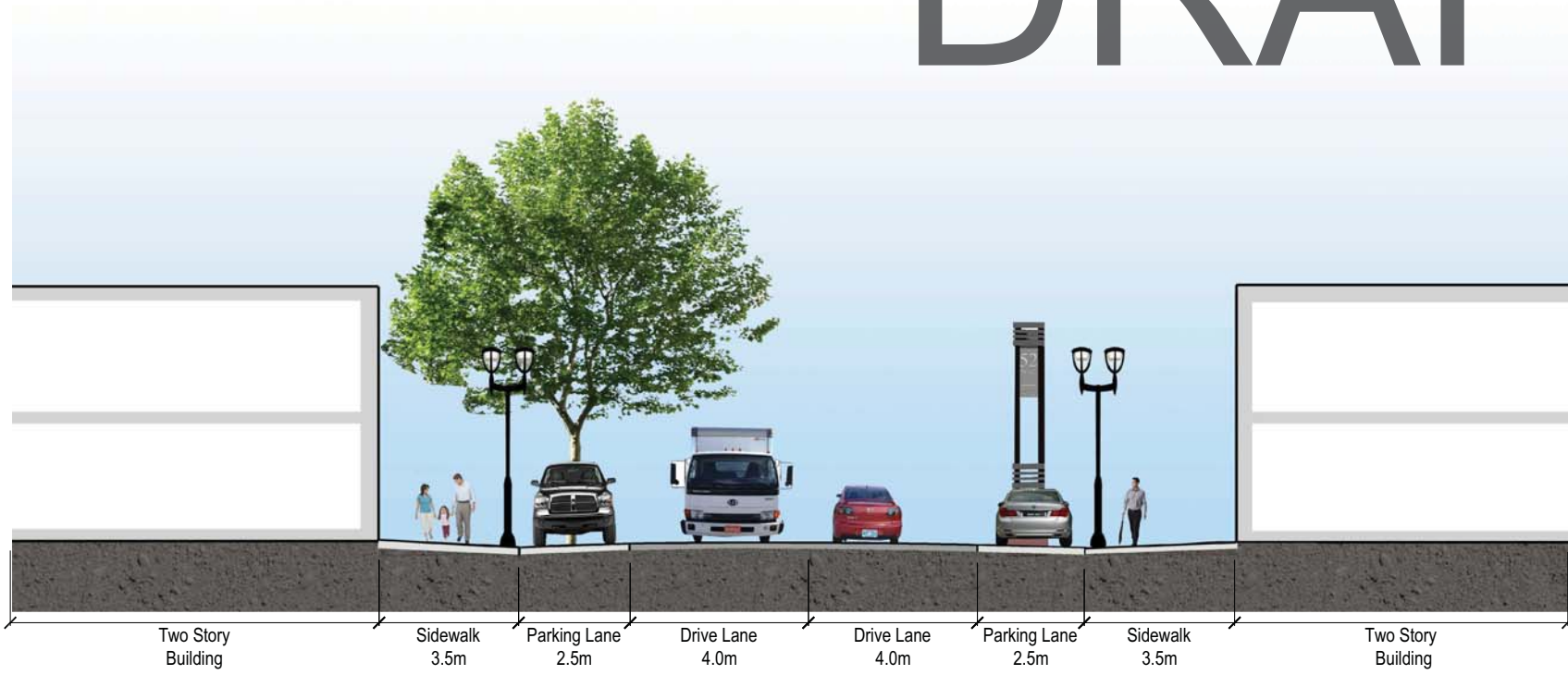
Architectural Street Marker: Option 1



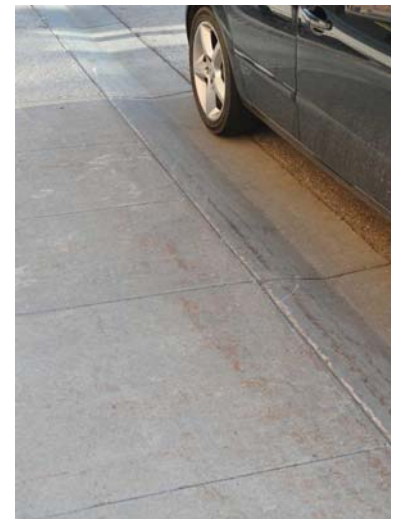
Architectural Street Marker: Option 2



DRAFT Roadway



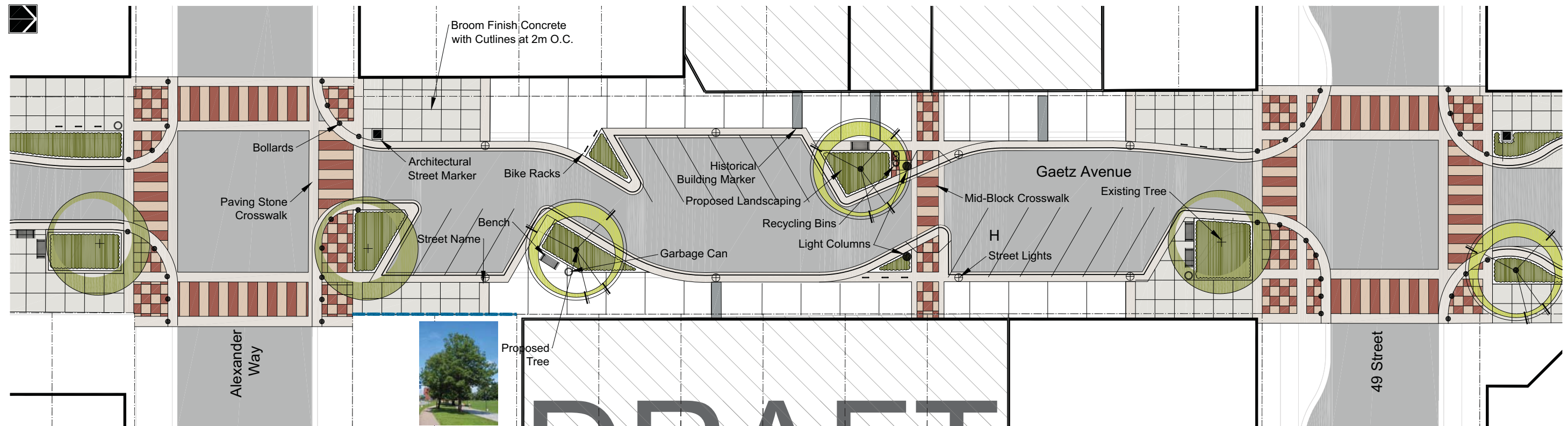
Looking south from intersection of Gaetz and Ross Street



The realignment of the roadway focuses on the addition of sidewalk, landscape and amenity spaces in order to emphasize Gaetz Avenue streetscape as a “pedestrian first” zone.

Pedestrian crossings will be highlighted with distinct paving treatments to provide visibility for both the pedestrian and traffic. Mid-block crossings encourages pedestrians to explore both sides of the street.

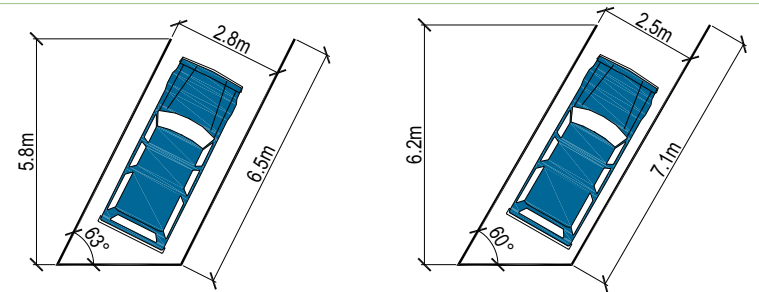
Rolled curbs and full radius street corners with bollards increase pedestrian mobility and accessibility.



Looking northwest towards the Scott Block

DRAFT

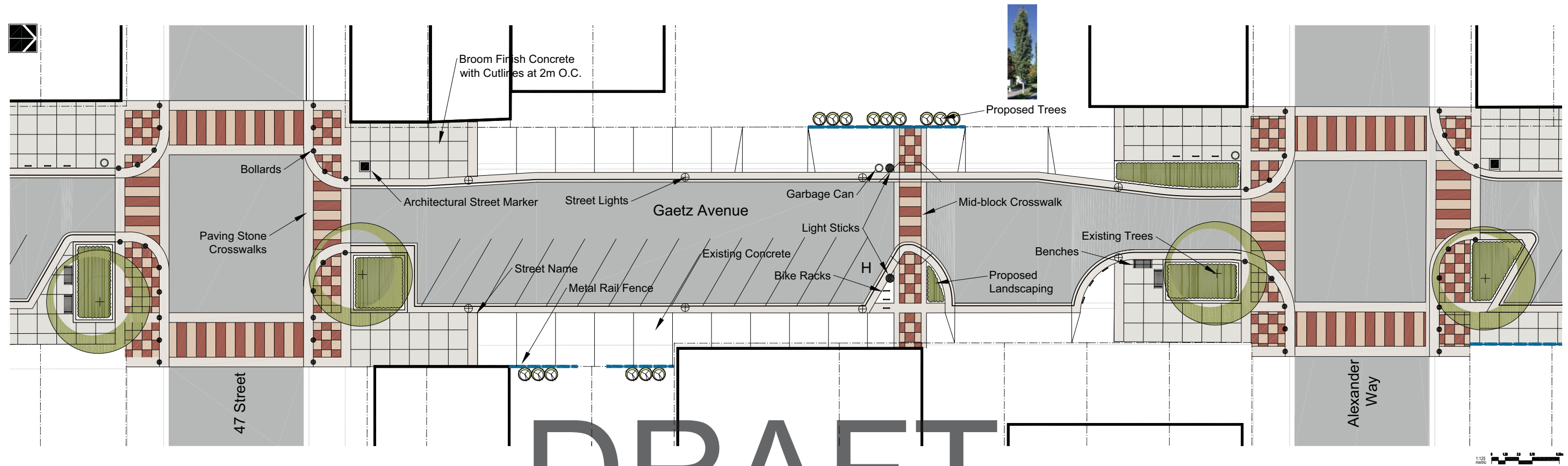
Parking



	Existing Parking	Proposed Parking
	# of Stalls	# of Stalls
53 St to 52 St	0	0
52 St to 51 St	24	17
51 St to Ross St	20	21
Ross St to 49 St	16	16
49St to 48 St	20	16
48 St to Alexander Way	18	14
Alexander Way to 46 St	30	16

Total Stalls 128

Total Stalls 100



DRAFT

Lighting

The selected street light fixtures reflects the overall aesthetic character of Gaetz Avenue and presents a contemporary interpretation of the historic downtown theme. These streetlights provide a pedestrian scale feature that aesthetically links the furnishings and amenities within the streetscape.

The quality and scale of the streetlight design reflects the need to provide a safe pedestrian and vehicular experience without undermining "dark-sky" principles.

The light sticks will highlight mid-block crossing to improve pedestrian safety and make the crosswalk more apparent. This simple lighting design will provide a soft glow at crosswalk rather than providing street level lighting.



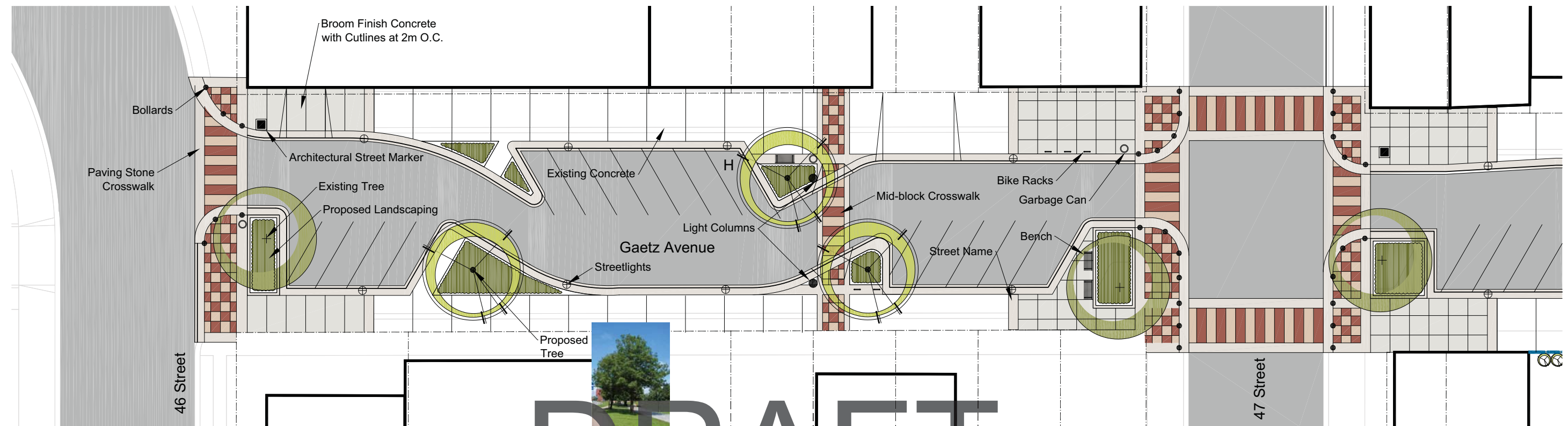
Looking northwest at the mid-block crosswalk between 47 St and Alexander Way



Light Column



Streetlight



DRAFT

