



Red Deer's Community Compass:

Our Master Plan for Service Delivery

Map Book

February 2026





Contents

Introduction	1
Planning Area	2
Population Distribution Across Neighbourhoods	3
Population Density Map	4
Youth and Senior Bivariate	5
Multiple Deprivation Index	6
Land Surface Temperature	8
Tree Canopy	10
Park Space per 1000 persons	12
Catchment Maps	13
Conclusion	33
References	34

Introduction

Understanding how people live, move, gather, and access services is essential to planning a resilient, equitable, and well connected city. This Red Deer Map Book brings together a comprehensive set of geospatial analyses that illustrate the city's demographic, environmental, and services to the community landscape. These maps provide an evidence based foundation for identifying opportunities, gaps, and emerging needs across neighbourhoods, helping to inform the direction of the Community Compass.

Drawing on population distribution, density, age based demographics, equity indicators, environmental conditions, and access to community amenities, the Map Book offers a clear visual narrative of how Red Deer's residents experience their city. It highlights where services are well supported, where pressure points may exist, and where strategic investment can have the greatest impact on quality of life.

These insights play a critical role in shaping planning decisions related to services to the community. By grounding recommendations in spatial evidence and by recognizing the diverse needs of Red Deer's communities, this document supports a thoughtful and equitable approach to community planning.





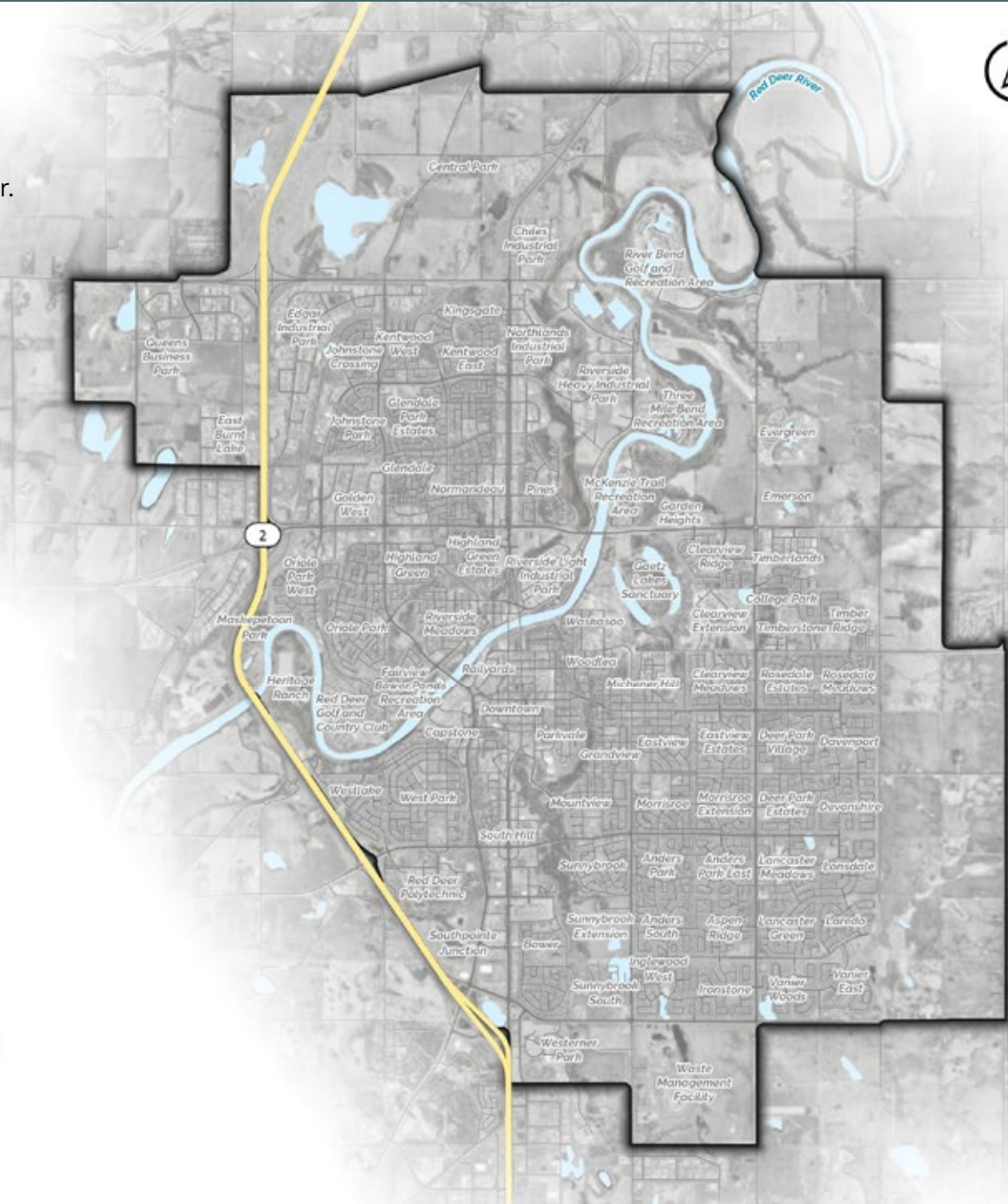
Planning Area

This map illustrates the planning area for Red Deer.

Understanding the needs and demands of residents begins with a clear picture of the city's community composition. The following geospatial analysis helps identify investment priorities for facilities and public spaces, and it also informs community service development. The following maps highlight key demographic insights that will guide the direction of the Community Compass.

LEGEND

-  Municipal Boundary
-  Waterbody
-  Highway
-  Road

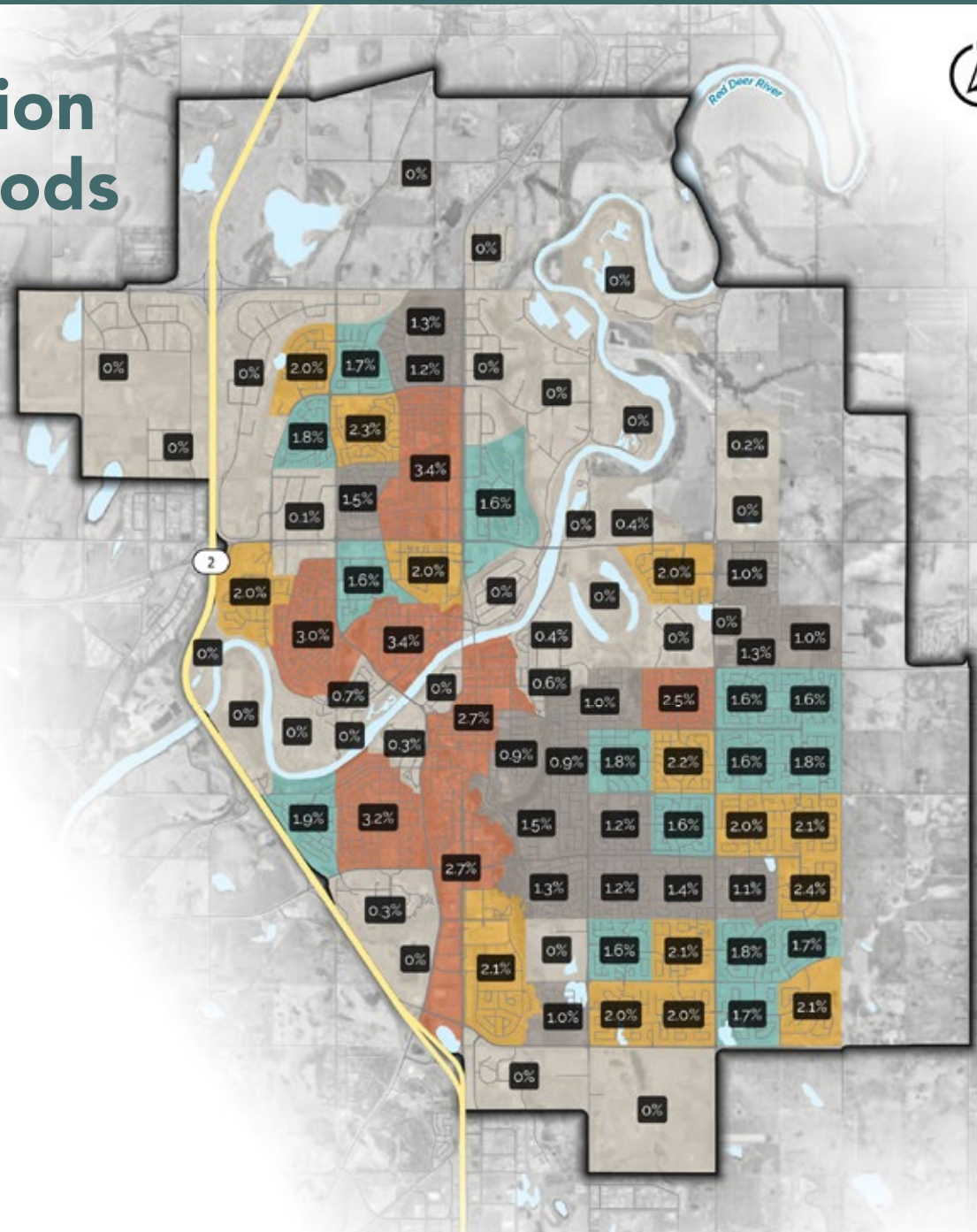


Population Distribution Across Neighbourhoods

This map represents the total population distribution across the neighbourhoods in Red Deer.

LEGEND

-  Municipal Boundary
-  Waterbody
-  Highway
-  Road
- Total Population**
-  Very Low
-  Low
-  Moderate
-  High
-  Very High
-  Population Distribution by Neighbourhood (%)





Population Density Map

This map highlights population density across neighbourhoods in the city. Areas shown in red have very high population density, while areas in grey represent lower density neighbourhoods.

The neighbourhoods with the highest population density are Johnstone Park, Clearview Meadows, Eastview Estates, Devonshire, Lonsdale, Laredo, and Aspen Ridge. "Very high" density is quantified by 30.1 – 37.5 people per hectare.

LEGEND

Municipal Boundary

Waterbody

Highway

Road

Population Density (Persons per ha)

Very Low (1.4 - 7.1)

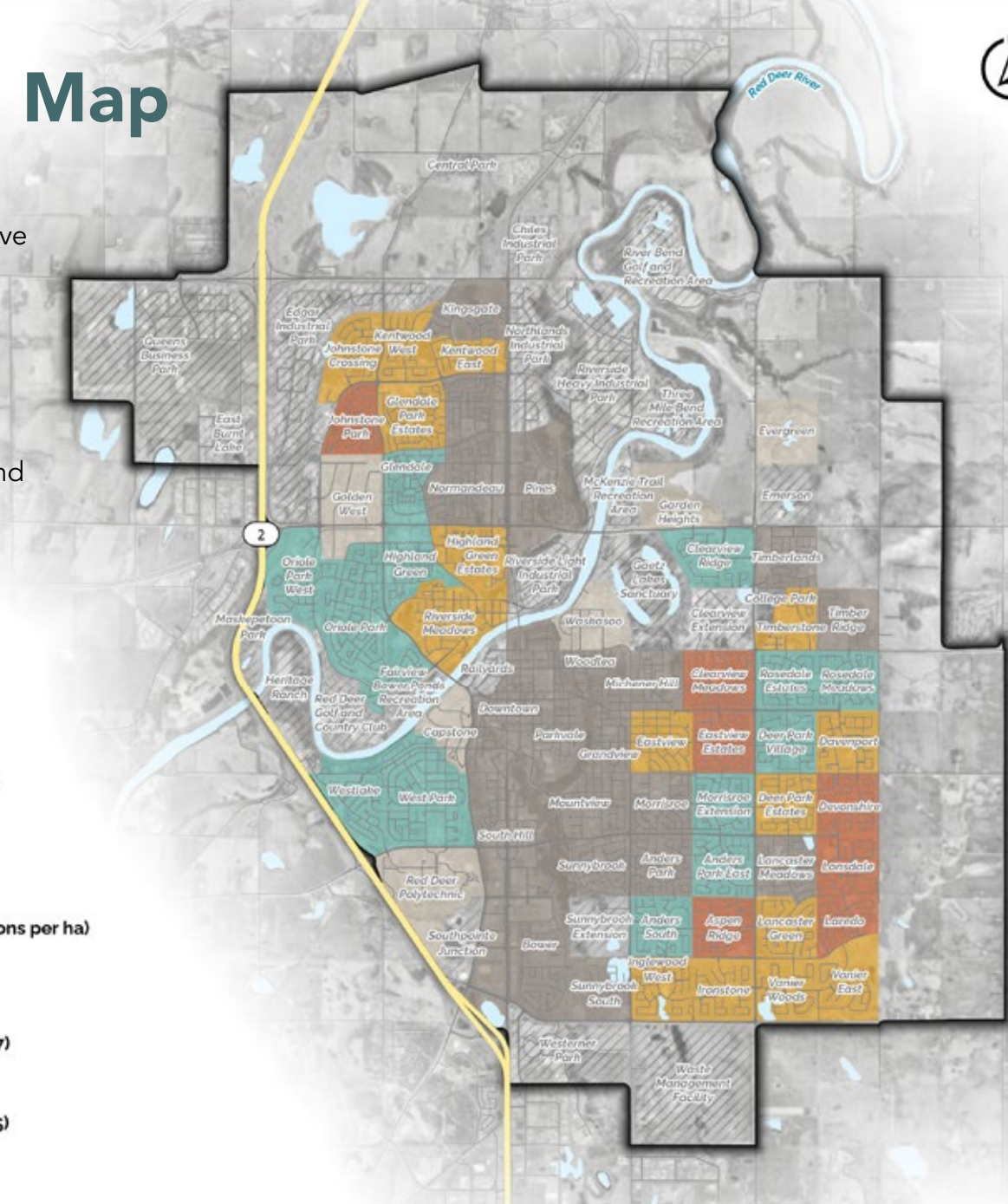
Low (7.1 - 19.8)

Moderate (19.8 - 25.7)

High (25.7 - 30.7)

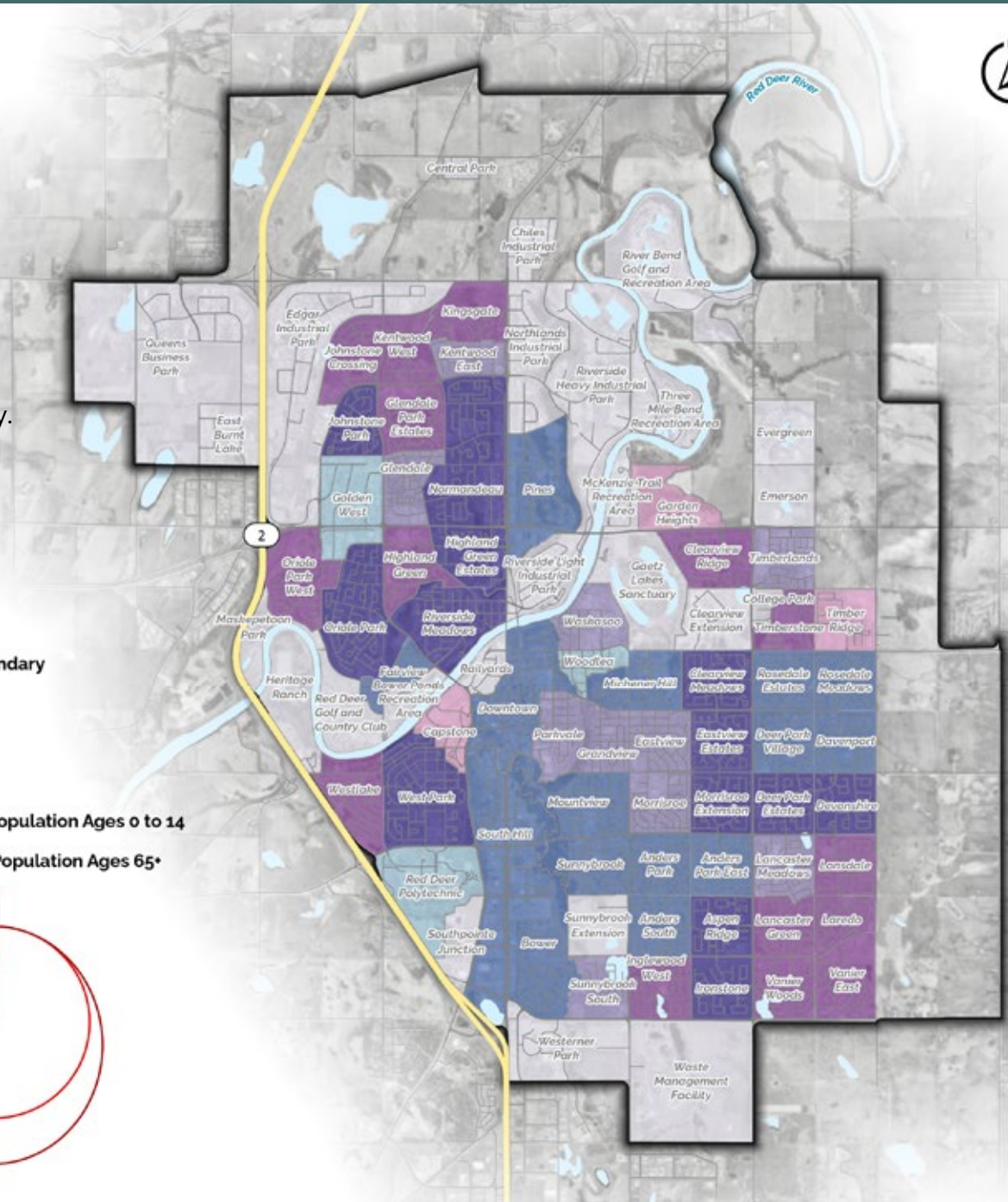
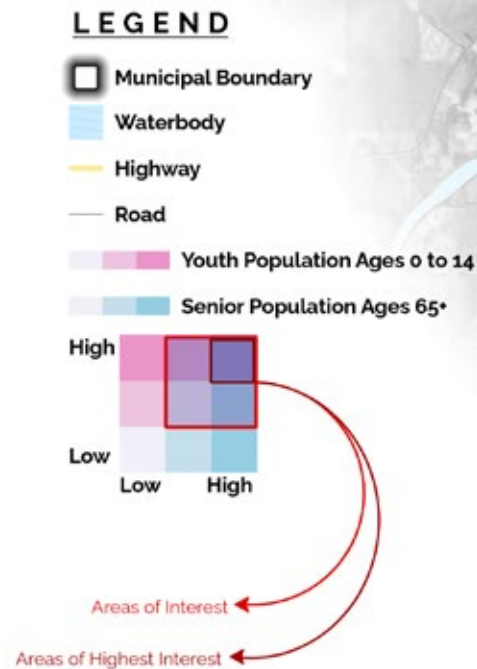
Very High (30.7 - 37.5)

No Population



Youth and Senior Bivariate

This map represents the bivariate of youth and senior populations across Red Deer. Neighbourhoods in dark purple have the highest presence of youth and senior populations compared to the other neighbourhoods of the city.

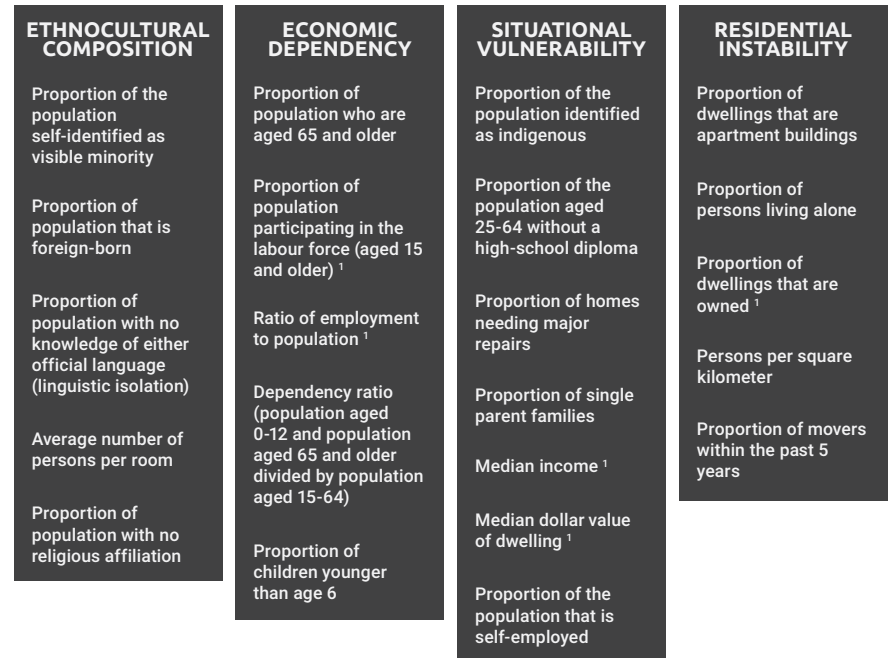


Multiple Deprivation Index

Equity is the acknowledgement that individual rights and opportunities are fundamental and not dependent on identity. It relates to the effort to understand and provide the different levels of support people need to enjoy full, healthy lives. Therefore, as it relates to the public investment in recreation, equity ensures that everyone receives the appropriate investment based on their individual or unique needs. Some communities, geographic and social, need more investment because they have been historically underserved.

No one factor of identity can determine if a community has been historically underserved, it is important to consider various facets of identity that may indicate communities which are equity deserving in our planning and investment.

It is important for the purposes of this study, to understand inequities that may exist throughout the city. The Canadian Index of Multiple Deprivation data set developed by Statistics Canada was analyzed to understand equity in Red Deer. The Canadian Index of Multiple Deprivation allows for an understanding of inequalities through various measures of social well-being, including health, education, housing, income and justice. There are four dimensions of multiple deprivation and their corresponding indicators, the following figure can be applied to the Prairie Region (Manitoba, Saskatchewan and Alberta).



1. This indicator was reverse-coded, meaning it was coded opposite of the measure. For example, proportion of the population that is married or common-law becomes proportion of population that is single, divorced, separated or widowed.
 Note: The dimensions are ordered such that the dimension on the left explains the highest percentage of the variance of the data and the dimension on the right explains the lowest percentage.
 Source: Canadian Index of Multiple Deprivation 2021, based on the 2021 Census of Population Long-Form.

Image Source, Statistics Canada, 2025¹

This map illustrates the multiple deprivation index analysis of the city; areas in red indicate areas of higher deprivation relative to other areas in the city. These areas may warrant additional attention and potential investment to address the unique barriers residents in these areas may face to engaging with community services.

Key Points:

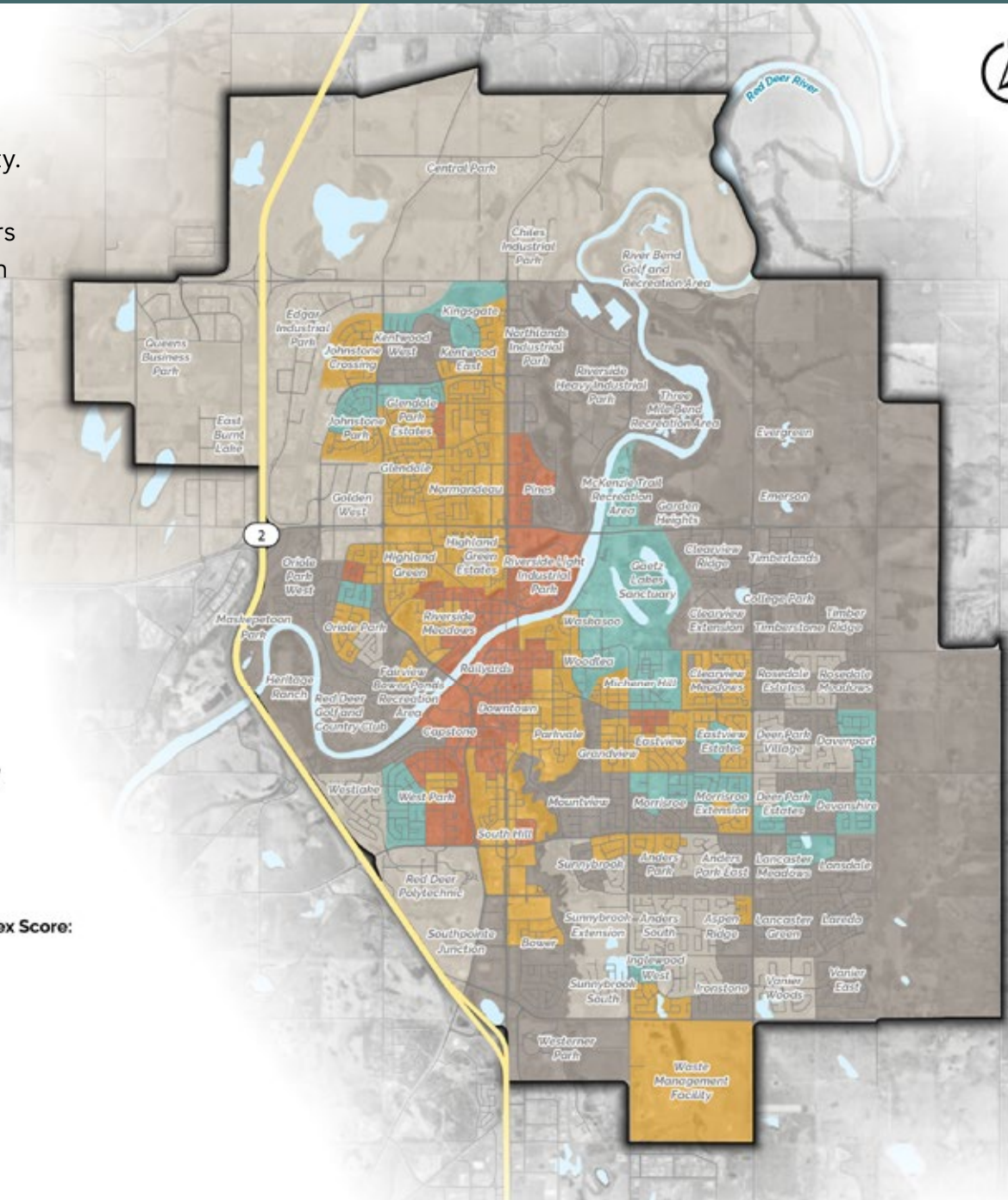
- The central part of the City has higher levels of deprivation compared to the outer limits of the City.
- Neighbourhoods of high deprivation can also be connected to the neighbourhoods with high population density as illustrated in the maps above.

LEGEND

- Municipal Boundary
- Waterbody
- Highway
- Road

Multiple Deprivation Index Score:

- Very Low
- Low
- Moderate
- High
- Very High



Land Surface Temperature

Understanding land surface temperature helps identify urban heat islands and highlight neighbourhoods that experience higher heat exposure. When paired with tree canopy height data, it also reveals how areas with taller, denser canopies tend to stay cooler, helping cities target where additional greening or shade infrastructure will have the greatest impact.

Landsat 8 Satellite Imagery has a thermal infrared sensor that enables us to get the land surface temperature. The information was collected in July 2024.

LEGEND

 Municipal Boundary

 Waterbody

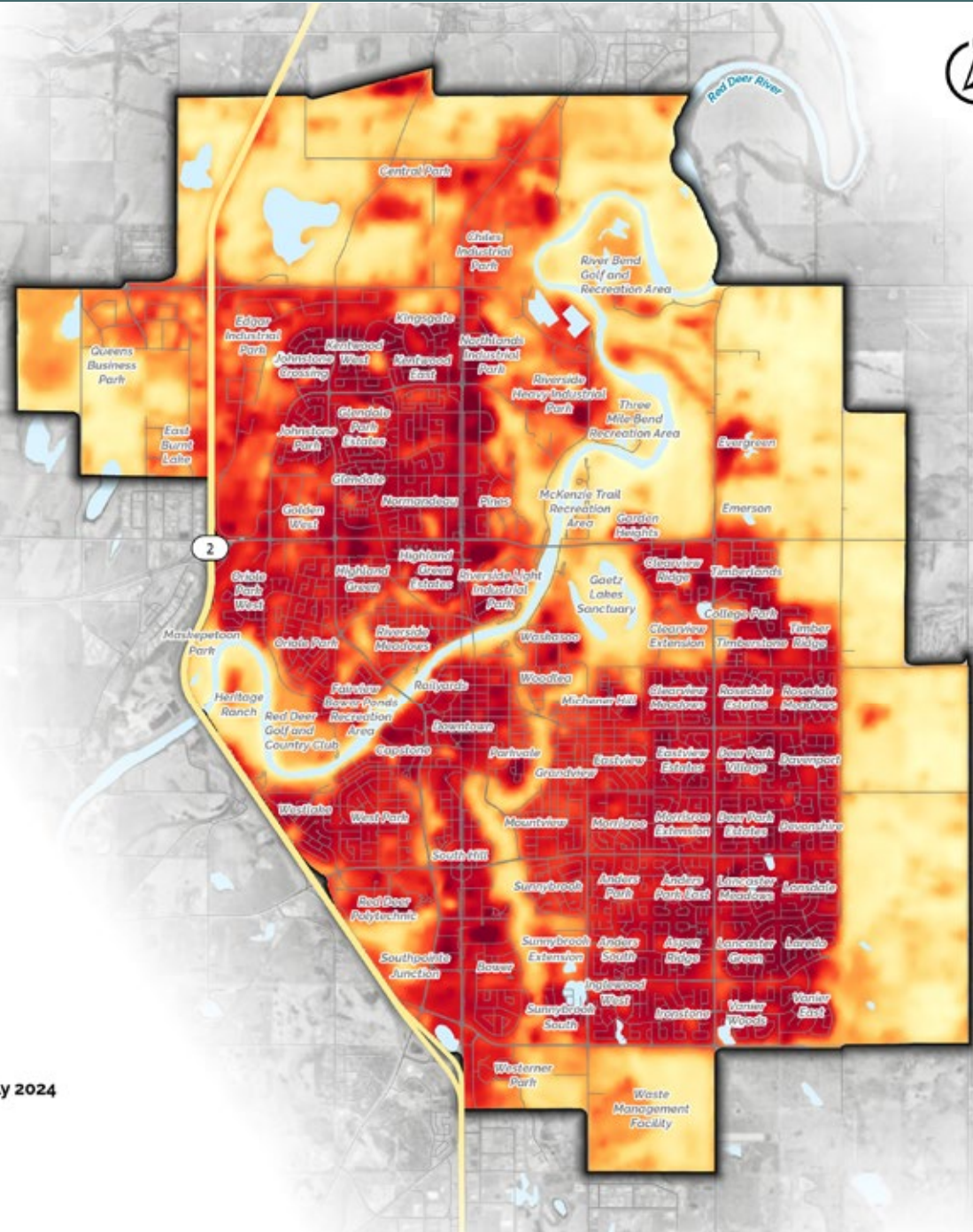
 Highway

 Road

Land Surface Temperature - July 2024

 37°C

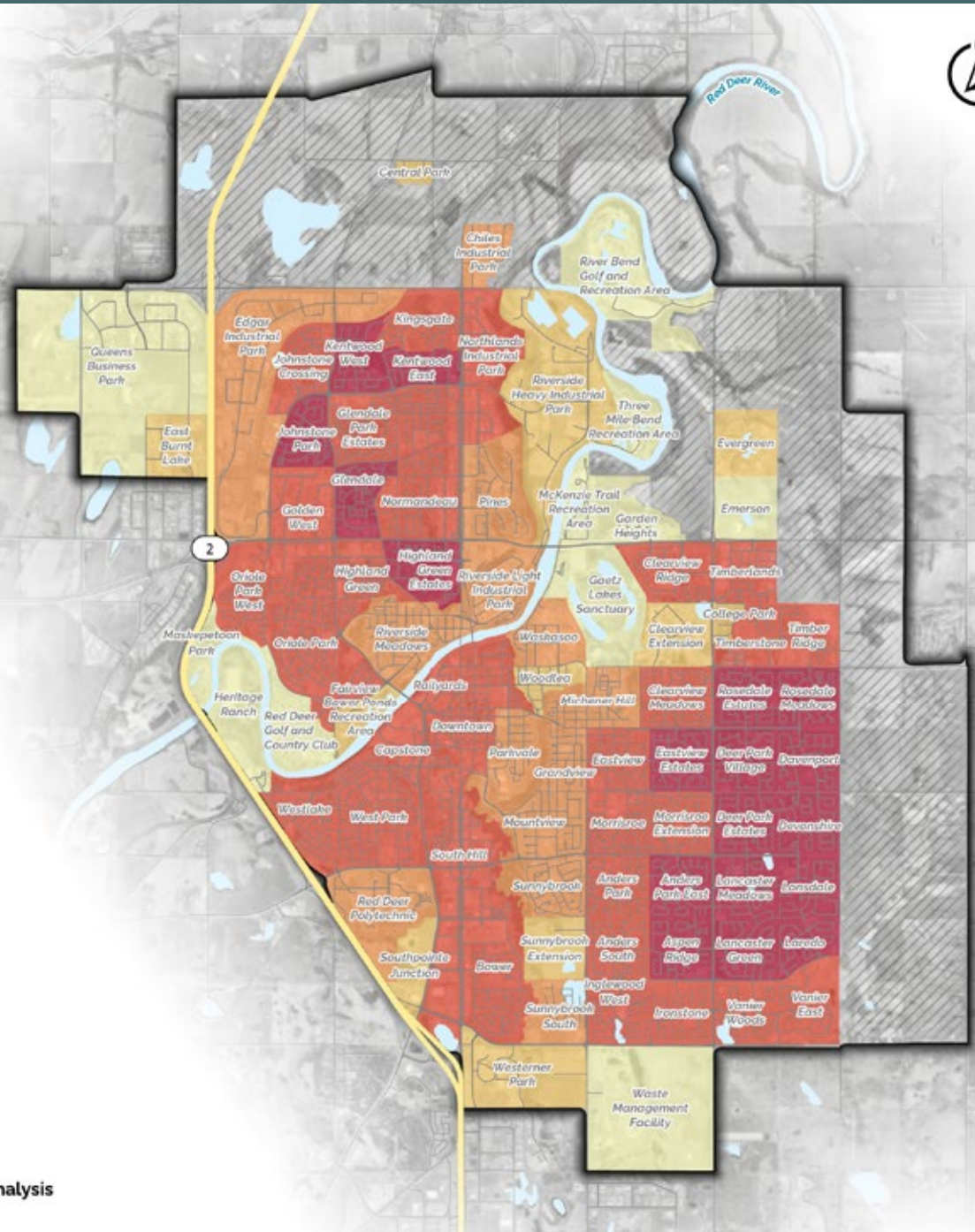
 18°C



This map represents the mean temperature values calculated across the neighbourhoods in Red Deer.

LEGEND

-  Municipal Boundary
-  Waterbody
-  Highway
-  Road
- Mean Temperature (°C)**
-  Very Low
-  Low
-  Moderate
-  High
-  Very High
-  Outside Neighbourhood Analysis

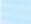


Tree Canopy

Areas of this map represents tree canopy height across the City.

LEGEND

 Municipal Boundary

 Waterbody

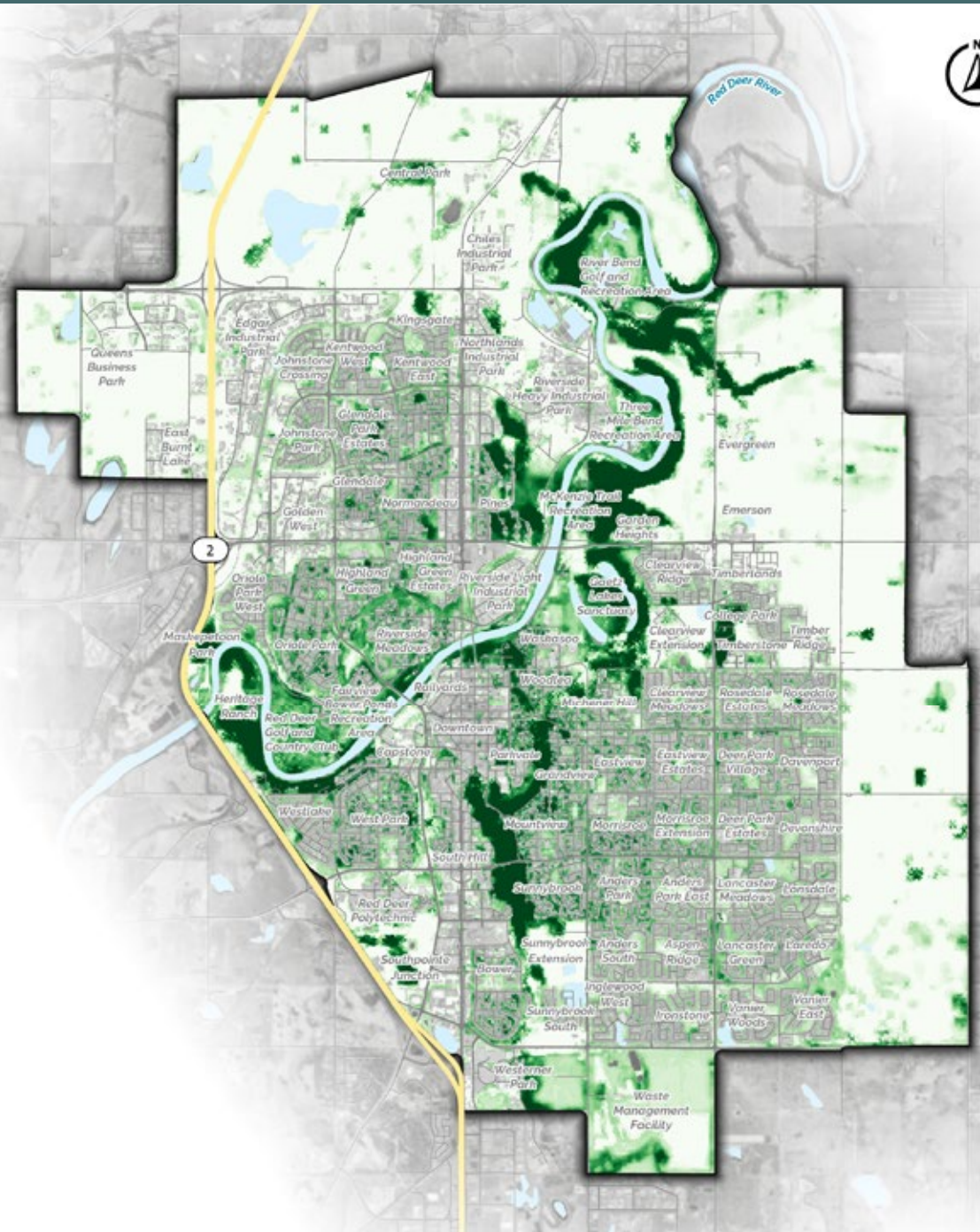
 Highway

 Road

Global Canopy Height 2020:

 High

 Low



Using the tree canopy height map, the mean tree canopy coverage was calculated across the neighbourhoods in Red Deer.

Key Points:

- The land temperature maps and tree coverage maps can be directly connected, areas of Red Deer with the lowest land temperature have the highest tree coverage.





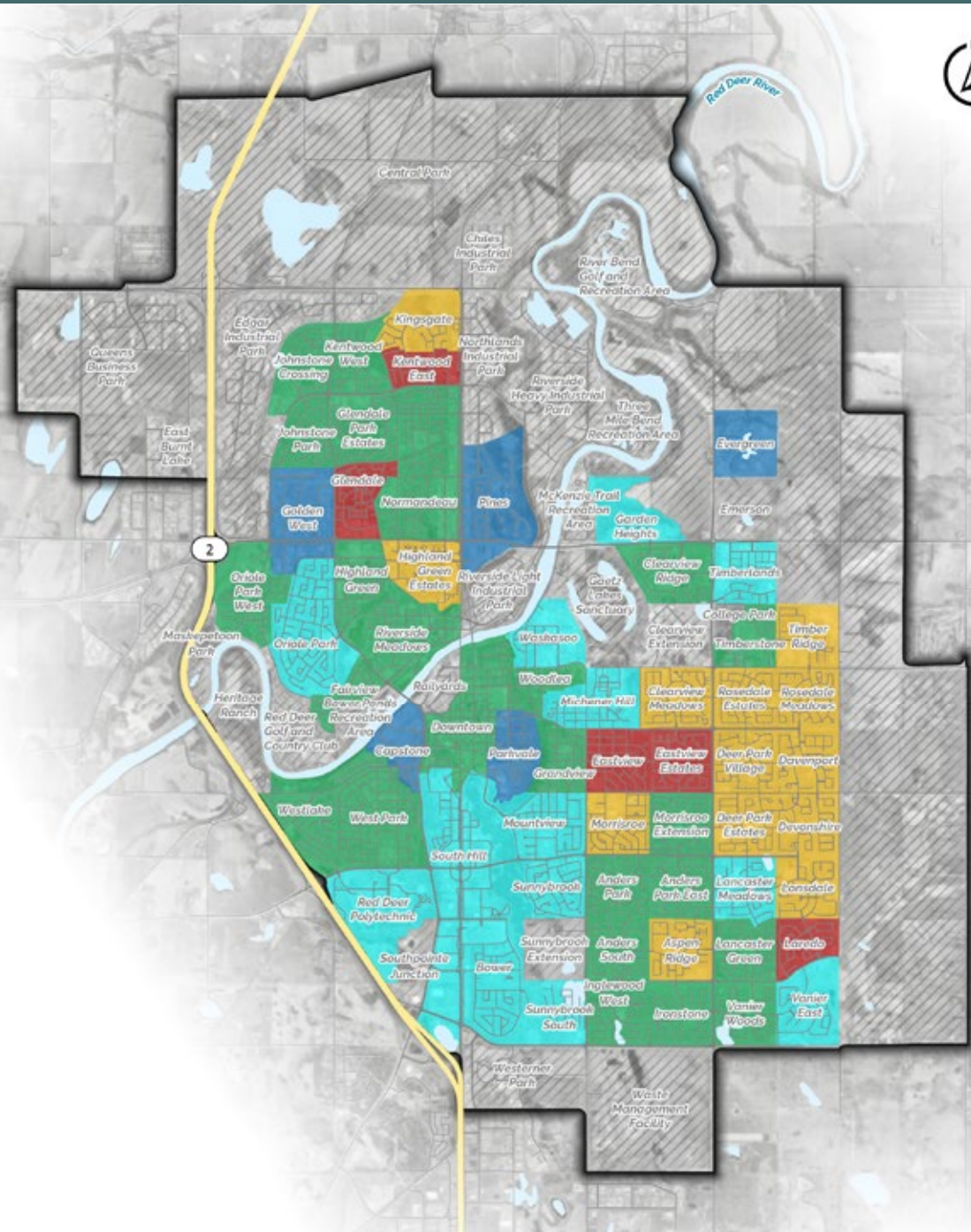
Park Space per 1000 persons

This map demonstrates the park space (hectares) per 1000 persons across Red Deer. Neighbourhoods of red have very low areas of park space compared to blue, which represents very high park space per 1000 persons.

While there is no single “correct” parkland provision ratio, comparing Red Deer’s provision levels with those of other municipalities offers a useful benchmark. On average, Canadian cities provide approximately 4.4 hectares of parkland per 1,000 residents. Red Deer provides 9.85 hectares per 1,000 residents, which is well above the national average.

LEGEND

- Municipal Boundary
- Waterbody
- Highway
- Road
- Park Space per 1000 Persons**
- Very High
- High
- Moderate
- Low
- Very Low
- No Population / Outside Neighbourhood Analysis



Catchment Maps

The following maps identify a variety of community services throughout The City and capture data demonstrating the walking catchments for these amenities. **Blue** is a 5-minute walking catchment, **yellow** is 10 minutes, **black** is 15 minutes and areas with no colour are outside the 15 minute walking catchment area for the amenities identified in the map.

Walk catchments add value by revealing how accessible facilities are for nearby residents and where walkability barriers limit reach. This helps The City identify service gaps, prioritize investments, and ensure strategic decisions are grounded in clear, equity-focused spatial evidence.





Walking Distance Transit Stops

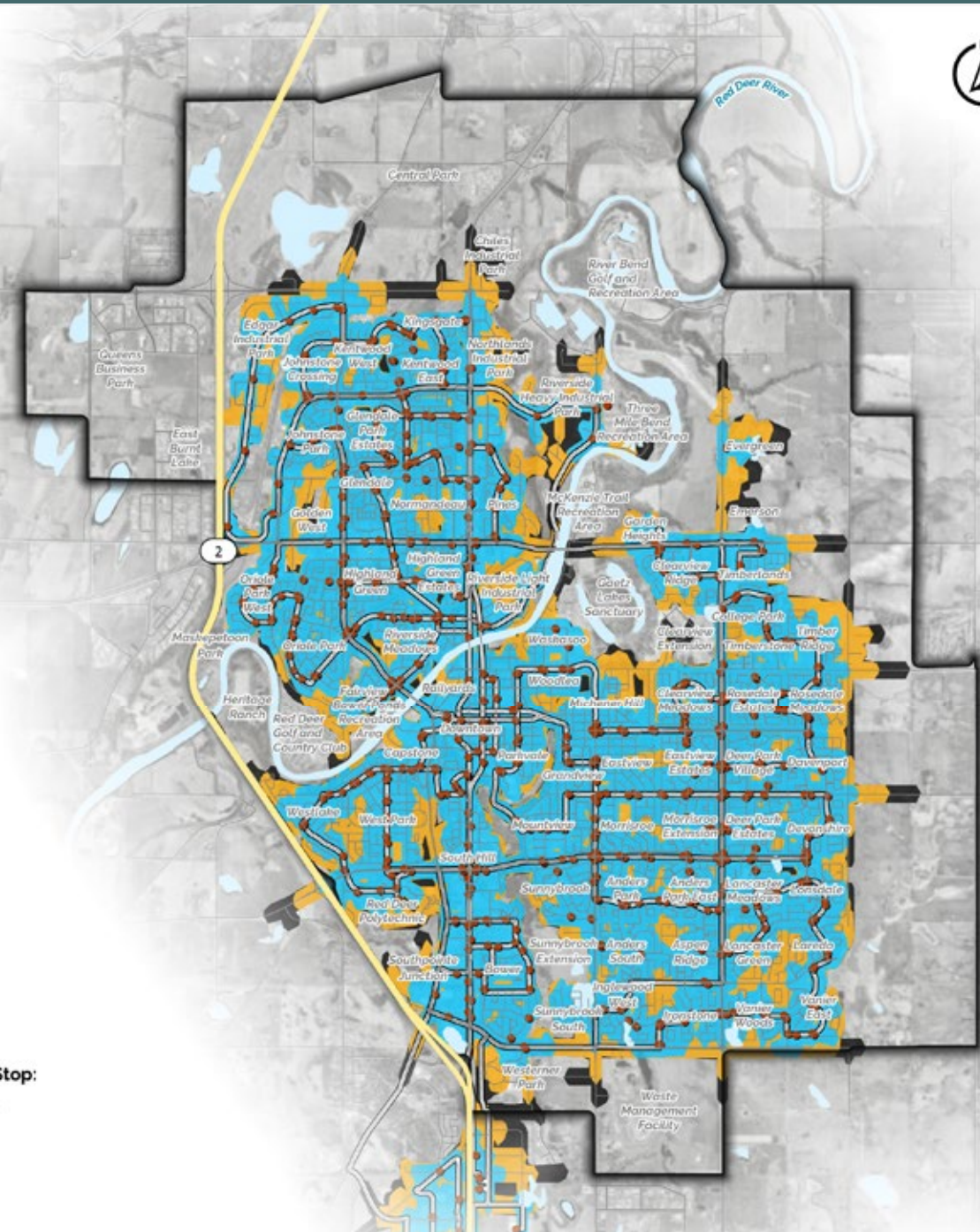
There is a good distribution of transit stops across Red Deer. With 614 transit stops throughout the City, almost all populated neighbourhoods have access to transit within a 15-minute walk.

LEGEND

- Municipal Boundary
- Waterbody
- Highway
- Road
- Transit Stop
- Transit Route

Walking Distance to a Transit Stop:

- ±15 minute walk (1,200 m)
- ±10 minute walk (800 m)
- ±5 minute walk (400 m)



Walking Distance Community and Culture Facilities

Community and culture facilities include spaces that enable social connection, creative expression, community identity, cultural participation, and lifelong learning.

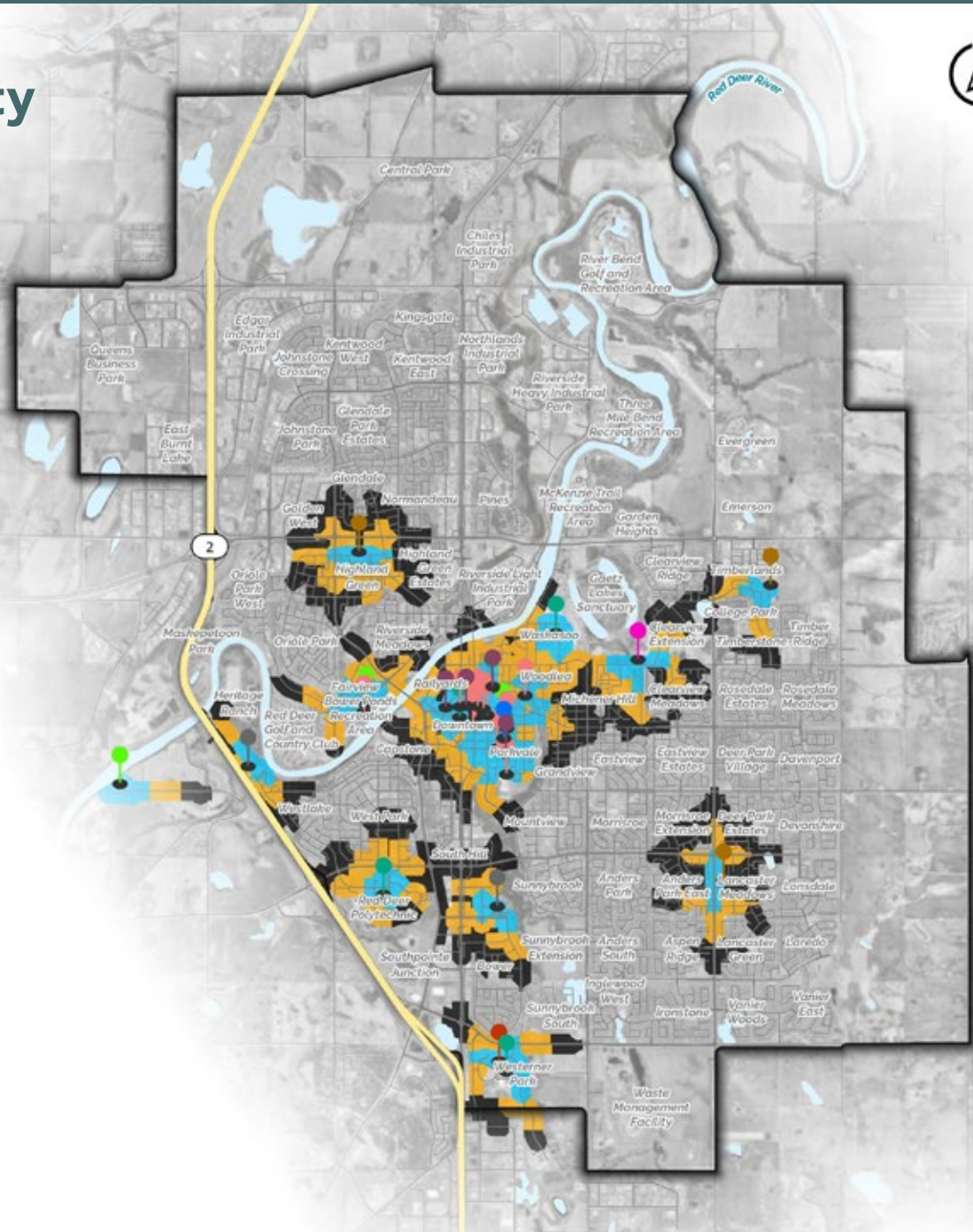
Delineating Factors:

- Provide gathering, learning, or cultural experiences.
- Include both civic and community-operated spaces.
- Not primarily designed for athletic or environmental purposes.

This map reflects the ecosystem of places that build belonging, identity, and cultural vitality.

LEGEND

-  Municipal Boundary
 -  Waterbody
 -  Highway
 -  Road
- Community & Cultural Facilities**
-  Arena
 -  Environmental Education Centre
 -  Heritage and Culture
 -  Indoor Arts and Culture
 -  Library
 -  Museum
 -  Outdoor Arts and Culture
 -  Seniors
 -  Urban Plaza / Square
- Walking Distance to a Facility:**
-  ±15 minute walk (1,200 m)
 -  ±10 minute walk (800 m)
 -  ±5 minute walk (400 m)



The community and culture facilities included in this map are listed below in no particular order.

Facility Name	Facility Type
Merchant Crane Centrum	Arena
J.J Gaetz House	Change to Environmental Education Centre
Cronquist House	Heritage and Culture
Fort Normandeau Fort	Heritage and Culture
Norwegian Laft Hus	Heritage and Culture
Red Deer Archives	Heritage and Culture
Intermediate School (cultural programming and Art Gallery)	Indoor Arts and Culture
Memorial Centre / Festival Hall	Indoor Arts and Culture
Red Deer Polytechnic, Arts Centre, Library	Indoor Arts and Culture
Scott Block Theatre	Indoor Arts and Culture
Westerner Park	Indoor Arts and Culture
Library - Centennial/Downtown	Library
Library - Collicutt Centre	Library

Facility Name	Facility Type
Library - GH Dawe Community Centre	Library
Library - Timberlands	Library
Museum & Art Gallery	Museum
AB Sports Hall of Fame & Museum	Museum
Sunnybrook Farm & Museum	Museum
Bower Ponds Stage	Outdoor Arts and Culture
Bronze Ghost Collection / Public Mural Locations	Outdoor Arts and Culture
Golden Circle	Seniors
Capstone / Canada 150 Square	Urban Plaza / Square
Gary w Harris Canada Games Celebration Plaza	Urban Plaza / Square
Heritage Square	Urban Plaza / Square
Ross Street Patio	Urban Plaza / Square

Walking Distance Neighbourhood Facilities

Neighbourhood facilities include local-scale amenities that serve day-to-day community life and support accessible opportunities close to where people live.

Delineating Factors:

- Serve a walkable catchment or specific neighbourhood.
- Often smaller-scale or multi-purpose.
- Provide social, recreational, or practical benefits within the local area.

The following two maps demonstrate access to indoor and outdoor neighbourhood facilities, highlighting community-level assets that contribute to neighbourhood livability and inclusion.



Indoor Neighbourhood Facilities



LEGEND

Municipal Boundary

Waterbody

Highway

Road

Red Deer Facilities (Indoor)

Activity Centre

Arena

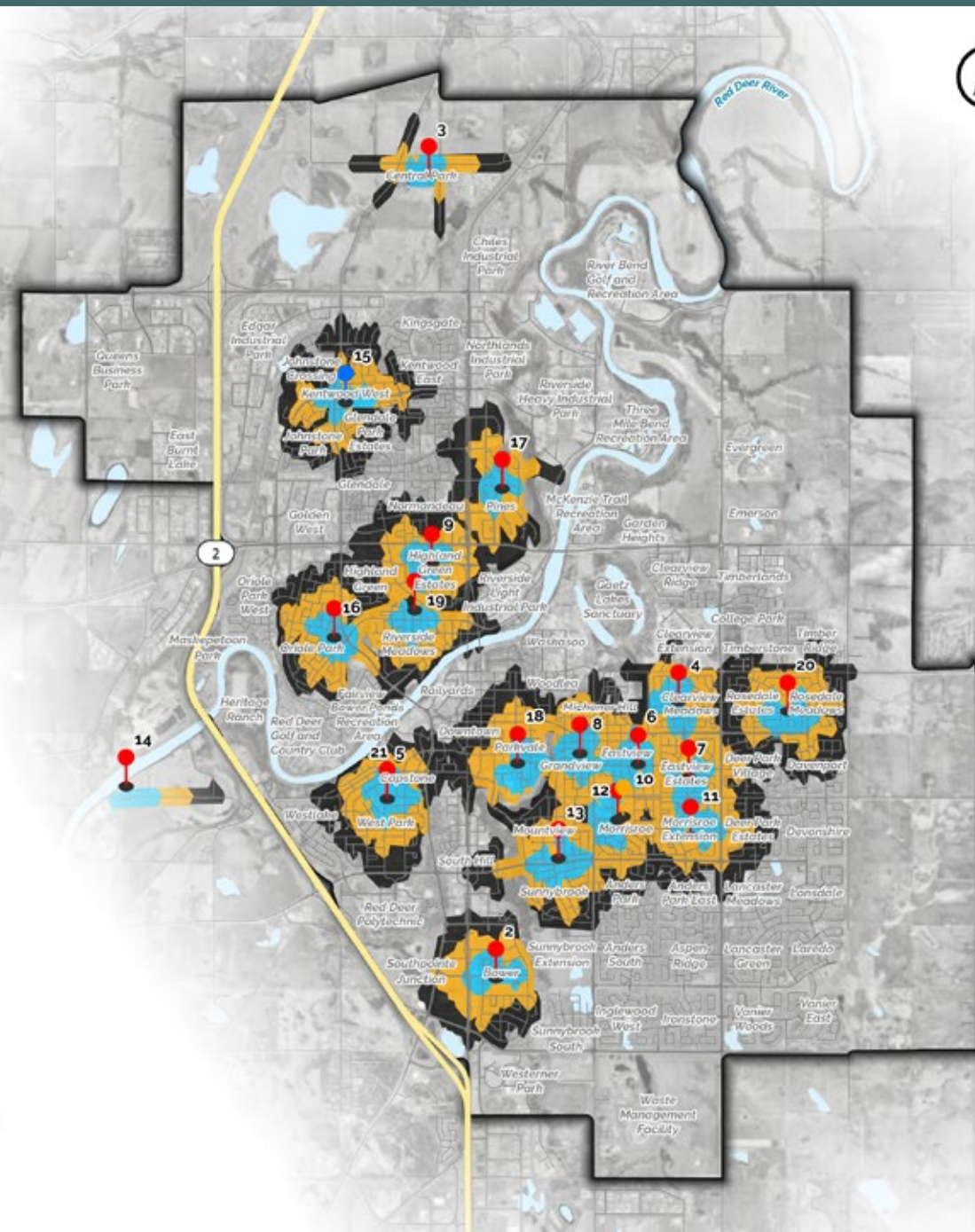
Community Centre

Walking Distance to a Facility:

±15 minute walk (1,200 m)

±10 minute walk (800 m)

±5 minute walk (400 m)



The indoor neighbourhood facilities included in this map are listed below in no particular order.

Facility Name	Facility Type
Bower-Kin Activity Centre	Activity Centre
Central Park Activity Centre	Activity Centre
Clearview Activity Centre	Activity Centre
Deer Park Activity Centre	Activity Centre
Eastview Activity Centre (Joseph Welsh School)	Activity Centre
Eastview Estates Activity Centre	Activity Centre
Grandview Gardens Activity Centre	Activity Centre
Highland Green Activity Centre	Activity Centre
Kinsmen Community Arenas	Arena
Morrisroe (E) Activity Centre	Activity Centre
Morrisroe West Activity Centre	Activity Centre

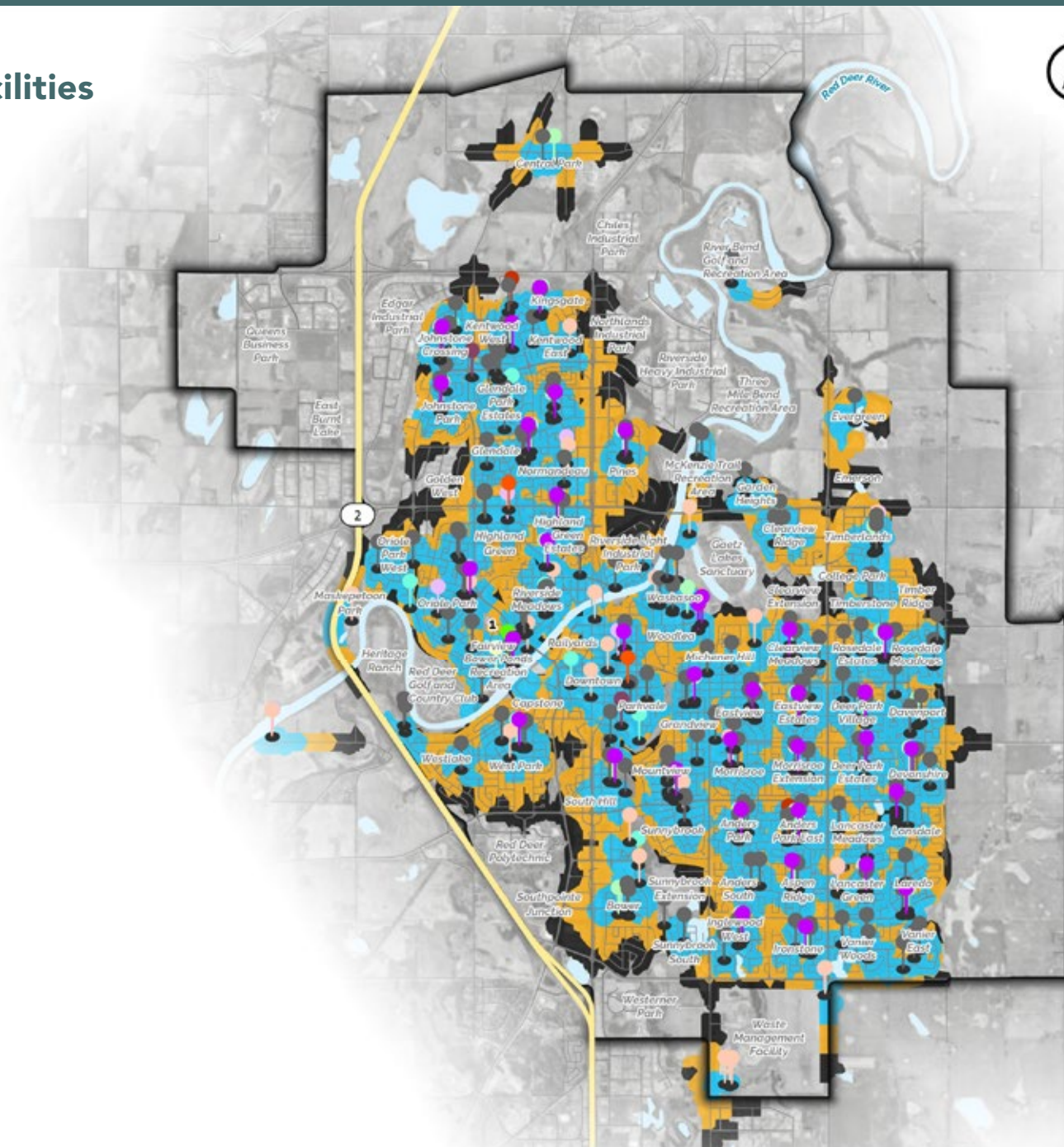
Facility Name	Facility Type
Mountview Sunnybrook Activity Centre	Activity Centre
Normandeu Activity Centre	Activity Centre
North Side Community Centre (YMCA)	Community Centre
Oriole Park Activity Centre	Activity Centre
Pines Activity Centre	Activity Centre
Pioneer Lodge	Activity Centre
Riverside Meadows Activity Centre	Activity Centre
Rosedale Activity Centre	Activity Centre
West Park Activity Centre	Activity Centre

Outdoor Neighbourhood Facilities



LEGEND

- Municipal Boundary
- Waterbody
- Highway
- Road
- Red Deer Facilities (Outdoor)**
- Community Recreation Area
- Disc Golf
- Fitness Park
- Food Forest
- Hockey
- Neighbourhood Gardens
- Playground
- Skateboard Park
- Skating
- Speedskating
- Spray Park
- Walking Distance to a Facility:**
- ±15 minute walk (1,200 m)
- ±10 minute walk (800 m)
- ±5 minute walk (400 m)



The outdoor neighbourhood facilities included in this map are listed below in no particular order.

Facility Name	Facility Type
Bower Ponds	Community Recreation Area
Central Park Sites	Community Park
Outdoor Rinks	Outdoor Skating
Playgrounds	Playgrounds
Community Food Forests & Orchards	Food Forest
Neighbourhood Gardens	Neighbourhood Gardens
Disc Golf (2 locations)	Disc Golf
Fitness Parks	Fitness Parks
Skate Parks	Skate Parks
Spray Parks	Spray Parks



Walking Distance Parks and Open Spaces

Parks and open space locations include public lands and outdoor spaces that contribute to ecological health, community well-being, outdoor recreation, and connectivity.

Delineating Factors:







- Primarily land-based, open-air, and non-program-dependent.
- Support environmental stewardship, passive recreation, and unstructured play.
- May include built amenities (playgrounds, spray parks, shelters) that serve the park experience.




The following two maps represent the city's natural and recreational landscape system.

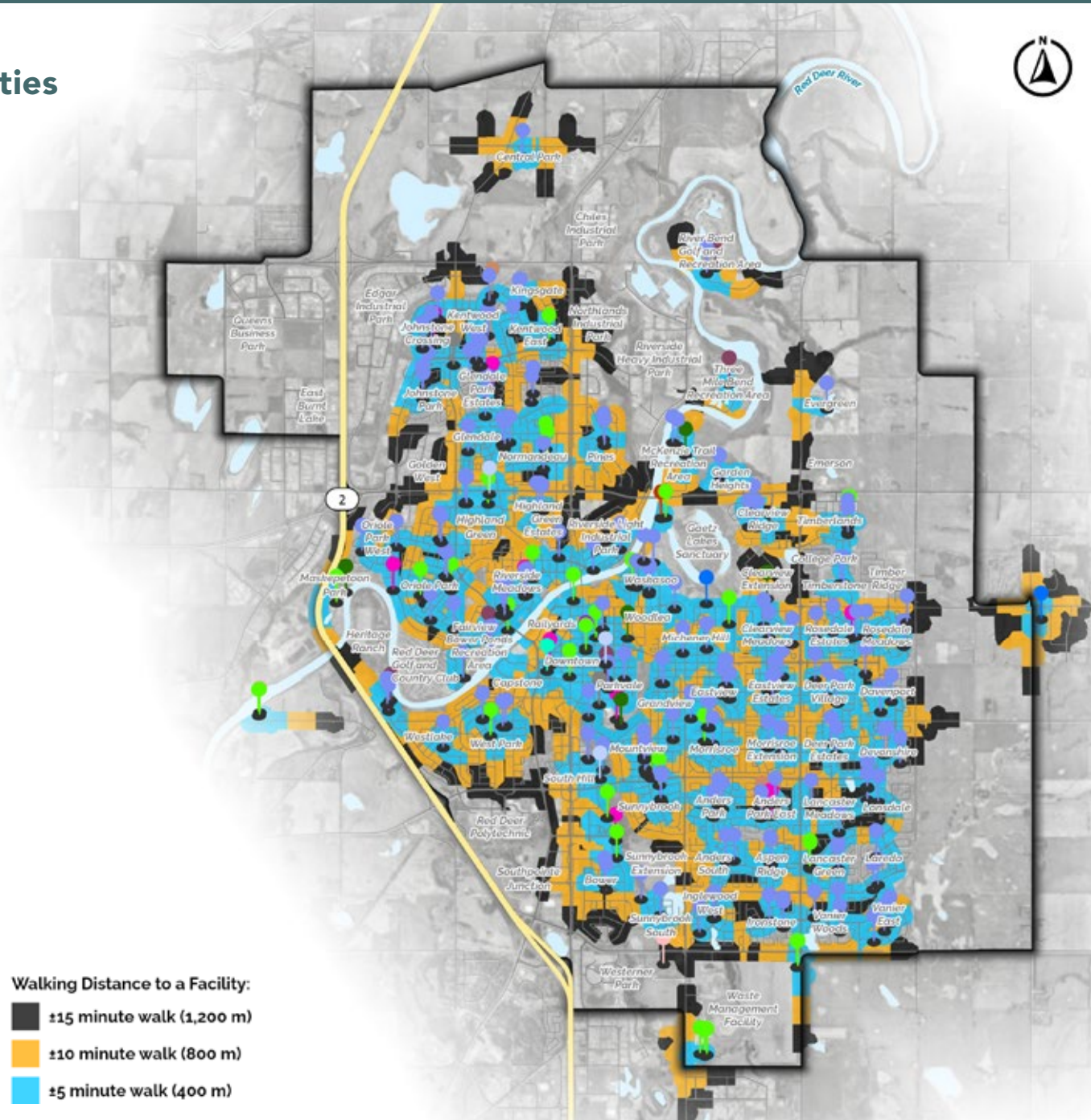


Parks and Open Spaces Facilities

LEGEND

-  Municipal Boundary
-  Waterbody
-  Highway
-  Road
- Open Spaces**
-  Cemetary
-  Community Park
-  Community Recreation Area
-  Disc Golf
-  Fitness Parks
-  Environmental Education Centre
-  Heritage and Culture Park
-  Nature Park
-  Neighbourhood Gardens
-  Playground
-  Skateboard Park
-  Spray Parks
-  Dog Park
-  Urban Plaza / Square

- Walking Distance to a Facility:**
-  ±15 minute walk (1,200 m)
 -  ±10 minute walk (800 m)
 -  ±5 minute walk (400 m)



The park and open spaces facilities included in this map are listed below in no particular order.

Facility Name	Facility Type
Kerry Wood Nature Centre / Gaetz Lake Sanctuary	Environmental Education Centre
Cemetery (Alto Rest)	Cemetery
Cemetery (Red Deer)	Cemetery
Central Park Sites	Community Park
City Hall Park	Community Park
Bower Ponds	Community Recreation Area
Heritage Ranch	Community Recreation Area
River Bend Golf & Recreation Area	Community Recreation Area
Rotary Recreation Park	Community Recreation Area
Three Mile Bend (Dog Park, Remote Control Car Park, Freestyle Water Ramp)	Community Recreation Area

Facility Name	Facility Type
Disc Golf (2 neighbourhood locations)	Disc Golf
Dog Park - Oxbows	Dog Park
Fitness Parks	Fitness Parks
Community Food Forests & Orchards	Food Forest
Garden Plots	Garden
Fort Normandeau	Heritage and Culture Park
Barrett Park	Nature Park
Coronation Park	Nature Park
KinKanyon	Nature Park
Kiwanis Picnic Park	Nature Park
Maskepetoon Park	Nature Park
McKenzie Trails Park	Nature Park
Michael O'Brien Wetlands	Nature Park

Facility Name	Facility Type
Neighbourhood Gardens	Neighbourhood Gardens
Outdoor Skating (Rinks, Bower and Setters)	Outdoor Skating
Playgrounds	Playgrounds
Skate Parks	Skate Parks
Spray Parks (Woody's, Central, KinKanyon)	Spray Parks
Centennial Plaza Park	Urban Plaza / Square

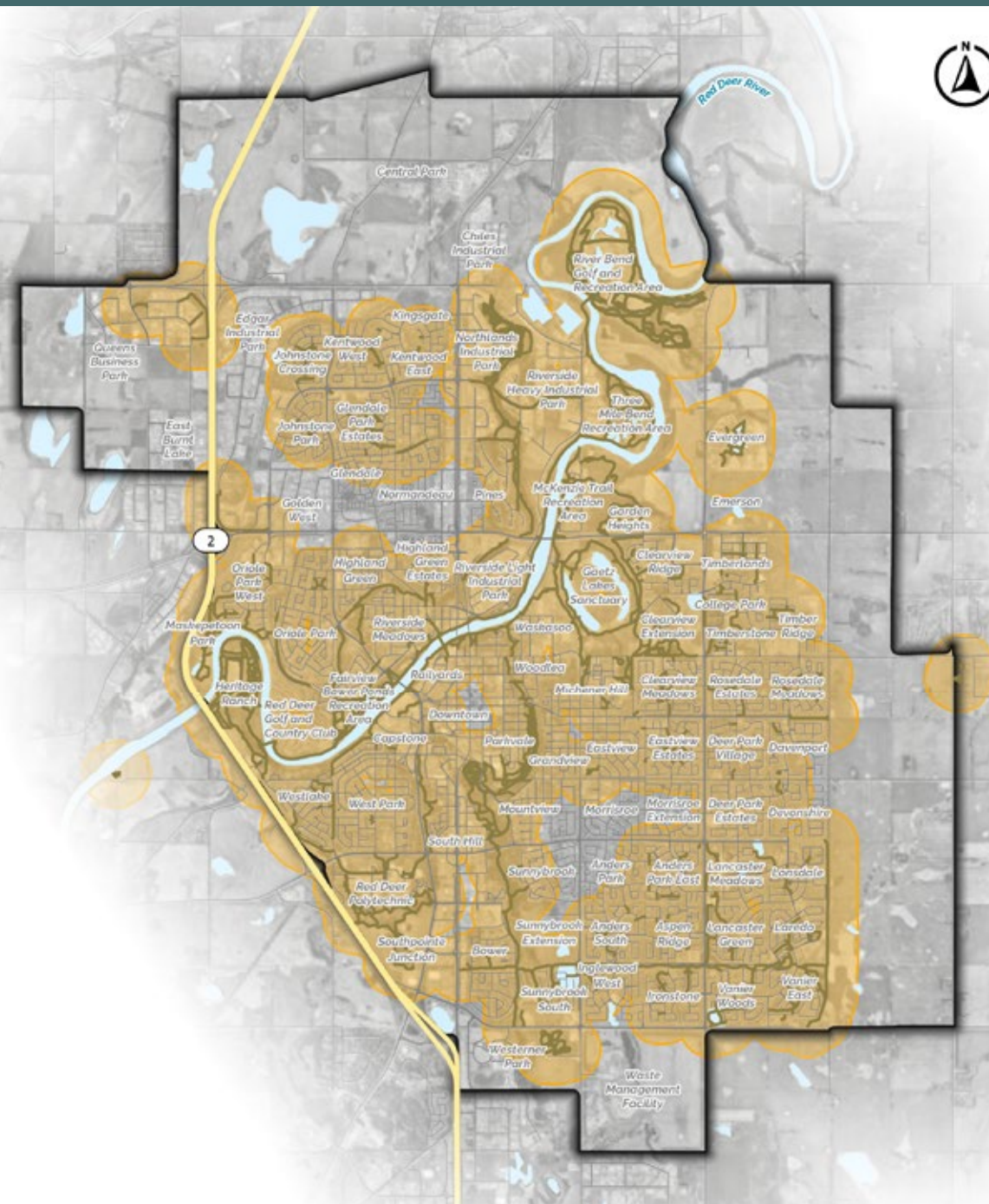


Trails

Note: This analysis is based on a straight-line buffer (“as the crow flies”) rather than network-based modeling (“as the crow walks”). The results do not account for the road network or actual travel routes.

LEGEND

-  Municipal Boundary
-  Waterbody
-  Highway
-  Road
-  Trails
- Trail Walking Distance:**
-  ±5 minute walk (400 m)



Walking Distance Recreation Facilities

Recreation facilities include built or purpose-designed spaces that enable structured or unstructured physical activity, sport, and health-related recreation.

Delineating Factors:

- Facilities designed for active recreation, whether indoor or outdoor.
- Often support organized sport, bookings, leagues, drop-in programs, and fitness activities.
- Includes both major centres (pools, arenas) and specialized outdoor assets (sport fields, courts).

The following three maps demonstrate access to indoor and outdoor recreation facilities, as well as sport field facilities, representing infrastructure that supports community health, activity levels, and sport development.

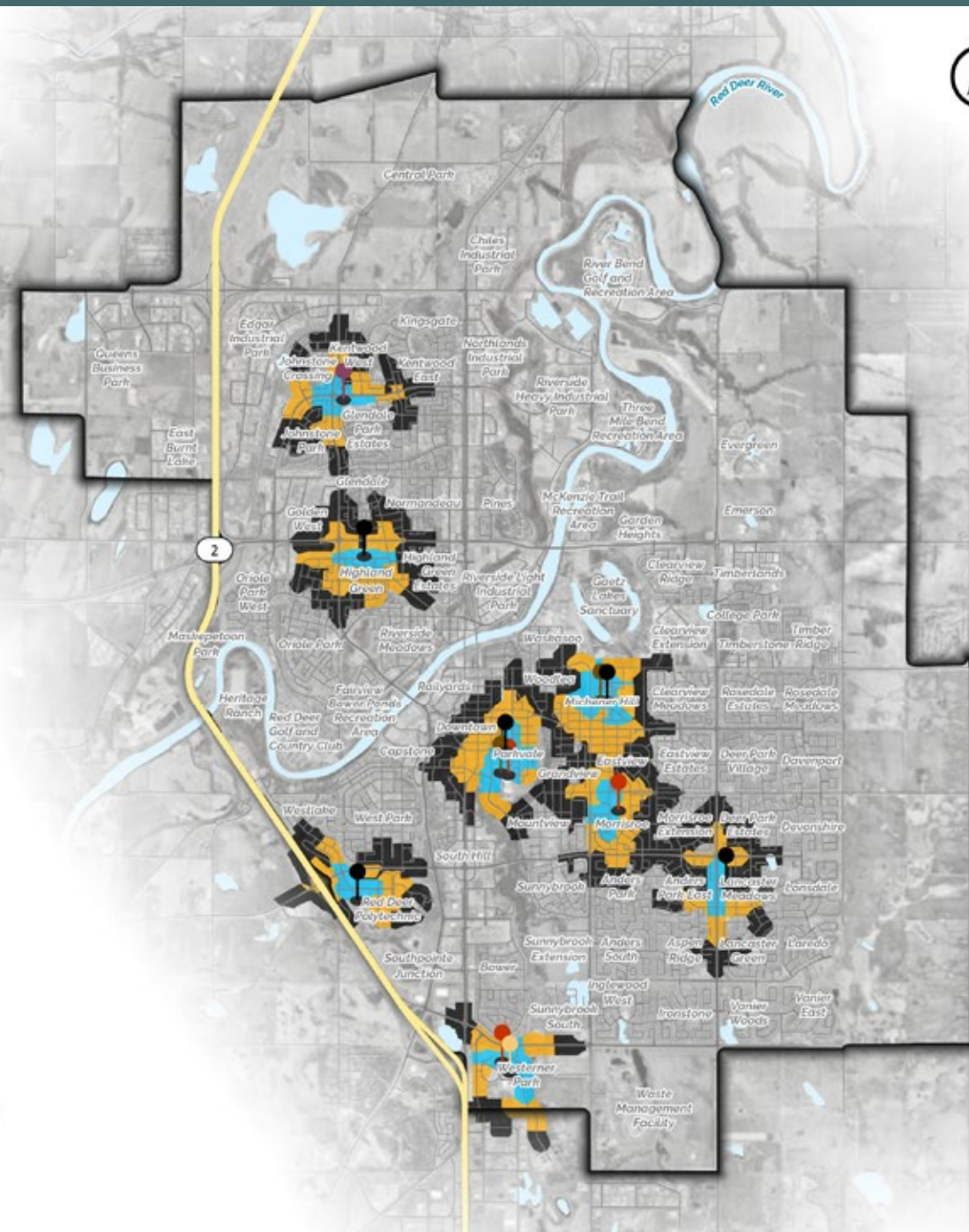


Indoor Recreation Facilities



LEGEND

- Municipal Boundary
- Waterbody
- Highway
- Road
- Recreation Facilities (Indoor)**
- Arena
- Community Centre
- Curling
- Indoor Arts and Culture
- Recreation Centre
- Walking Distance to a Facility:**
- ±15 minute walk (1,200 m)
- ±10 minute walk (800 m)
- ±5 minute walk (400 m)



The indoor recreation facilities included in this map are listed below in no particular order.

Facility Name	Facility Type
Merchant Crane Centrium	Arena
Servus Arena	Arena
Kinsmen Community Arenas	Arenas
Northside Community Centre	Community Centre
Michener Hill Curling Club	Curling
Pidherney Centre	Curling
Westerner Park	Indoor Arts and Culture
Collicutt Centre	Recreation Centre
Don Moore Recreation Centre	Recreation Centre
Gary W Harris Canada Games Centre (public fitness facilities, gym, squash courts, ice, etc)	Recreation Centre
GH Dawe Community Centre	Recreation Centre
Michener Aquatic Centre	Recreation Centre

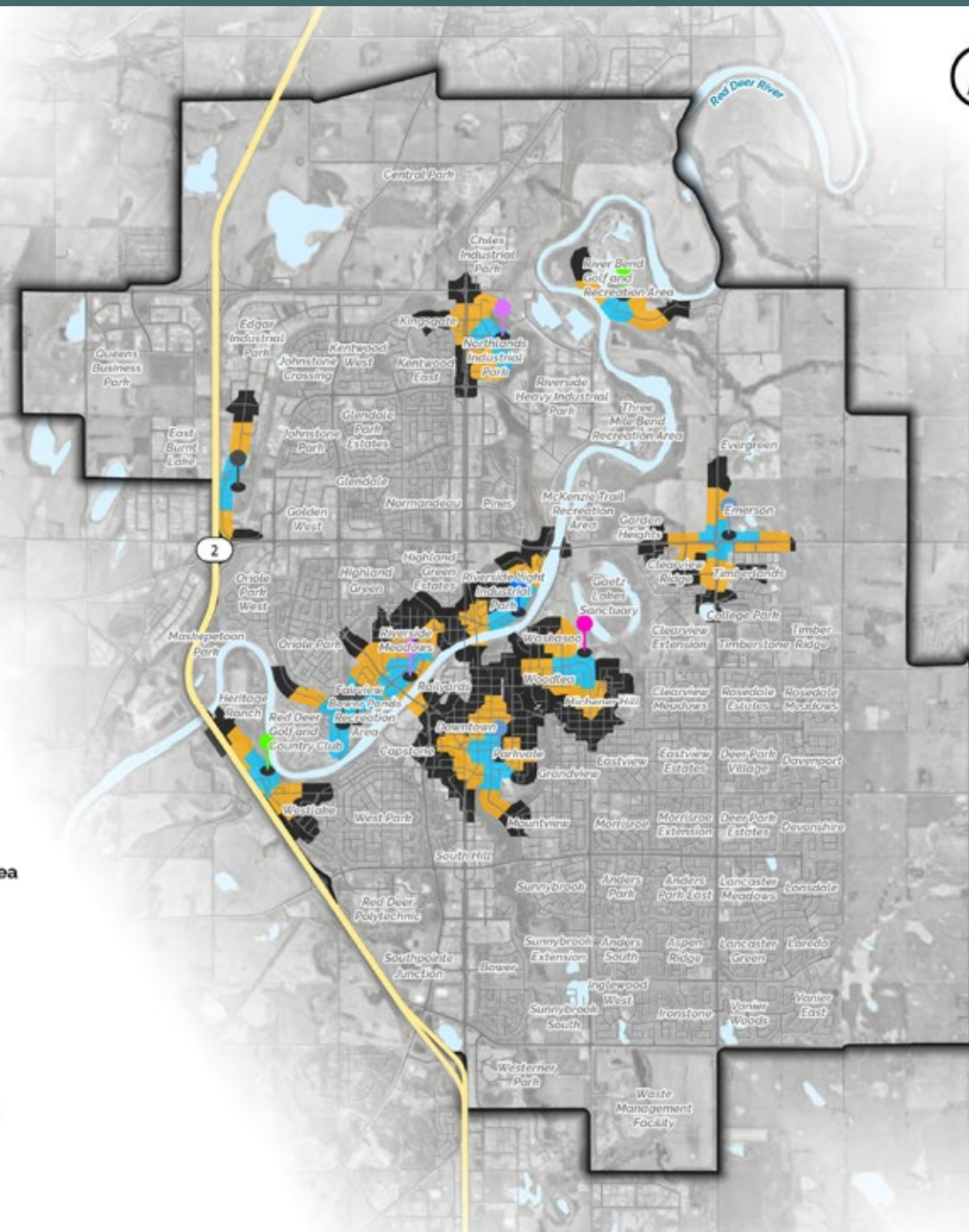


Outdoor Recreation Facilities



LEGEND

-  Municipal Boundary
-  Waterbody
-  Highway
-  Road
- Recreation Facilities (Outdoor)**
-  Bike Park
-  Campground
-  Community Recreation Area
-  Community Sports Fields
-  Pickleball / Tennis
-  Track and Field
- Walking Distance to a Facility:**
-  ±15 minute walk (1,200 m)
-  ±10 minute walk (800 m)
-  ±5 minute walk (400 m)



The outdoor recreation facilities included in this map are listed below in no particular order.

Facility Name	Facility Type
Great West Adventure Park (BMX)	Bike Park
Mountain Bike Park	Bike Park
Lions Campground	Campground
Heritage Ranch (includes trail network, equestrian facilities, restaurant, etc.)	Community Recreation Area
Riverbend Golf & Recreation Area / Discovery Canyon	Community Recreation Area
Edgar Athletic Park	Community Sports Fields

Facility Name	Facility Type
Great Chief Park	Community Sports Fields
Setters Place	Community Sports Fields
Motorworks Field	Community Sports Fields
Pickleball Club	Pickleball / Tennis
Tennis Club	Pickleball / Tennis
Woody's Athletic Park	Track and Field

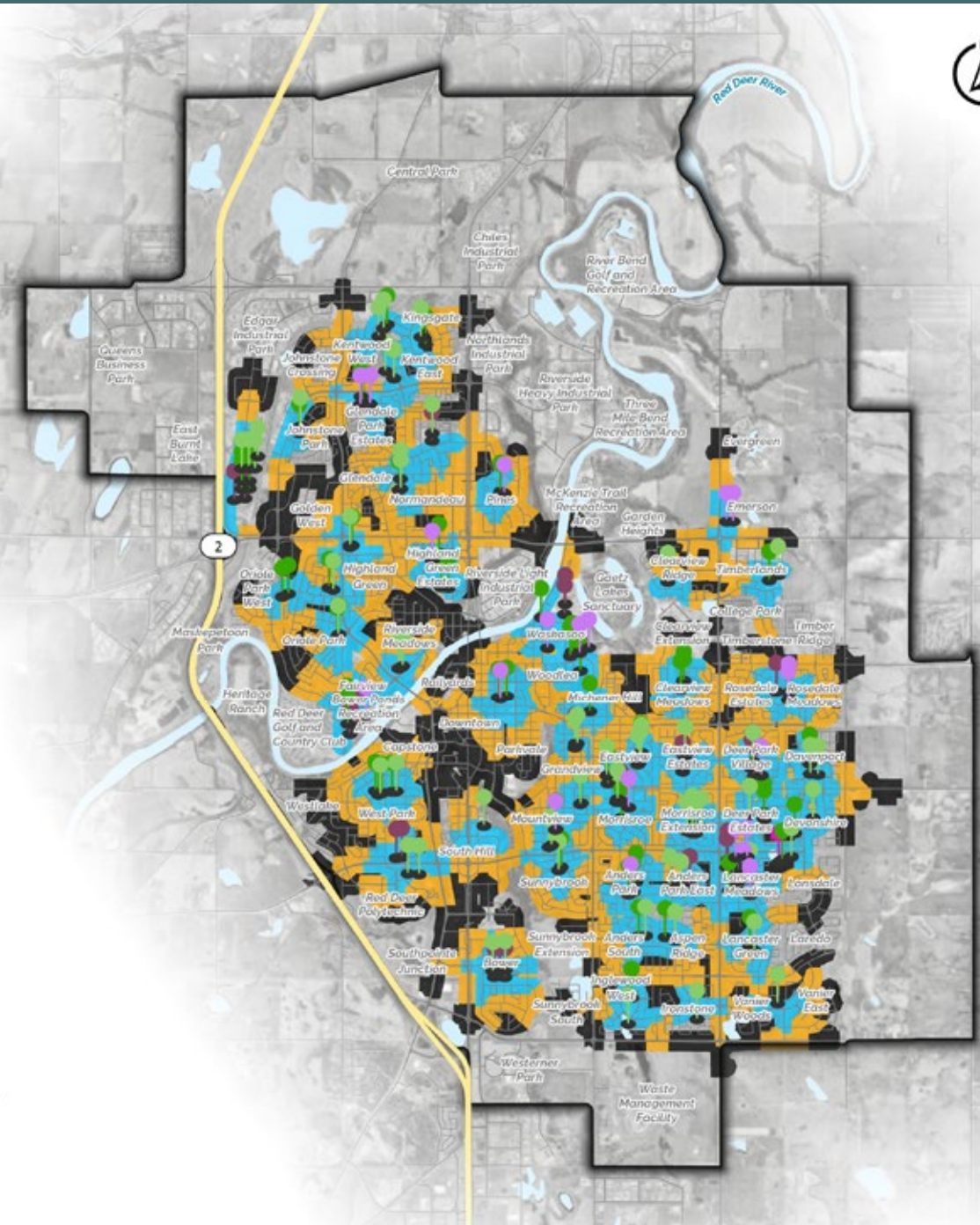
Sport Field Facilities

The outdoor sport field types included in this map are listed below in no particular order.

Facility Type
Baseball
Cricket
Slo-Pitch / Softball
Soccer
Soccer / Football

LEGEND

- Municipal Boundary
- Waterbody
- Highway
- Road
- Sports Fields**
 - Baseball
 - Cricket
 - Slo-Pitch/Softball
 - Soccer
 - Soccer/Football
- Walking Distance to a Facility:**
 - ±15 minute walk (1,200 m)
 - ±10 minute walk (800 m)
 - ±5 minute walk (400 m)



Conclusion

The Red Deer Map Book brings together a comprehensive set of geospatial analyses that reveal residents' demographics and access to services in the community. Together, these maps highlight important patterns such as where population density is highest, where inequities persist, how environmental conditions vary, and how well different types of facilities and amenities serve surrounding neighbourhoods. By visualizing demographic trends, environmental characteristics, and service catchments in a single integrated resource, this document provides a clear foundation for understanding both current conditions and future needs.

This geographic evidence underscores the importance of planning equitable approaches that are community-informed and responsive to changing demographics. Areas experiencing higher deprivation, greater heat exposure, or limited walkable access to services can be more intentionally supported. Likewise, neighbourhoods with strong amenity coverage or environmental assets can guide best practices or become anchors for expanded networks of services.

As the Community Compass continues to evolve, the insights from this Map Book will provide essential grounding for strategic decision-making. By linking data with lived experience and community priorities, the City of Red Deer can continue to build a resilient, vibrant, and inclusive city, one where every resident has equitable access to the services in the community that support their wellbeing.



References

i Statistics Canada, *The Canadian Index of Multiple Deprivation*, <https://www150.statcan.gc.ca/n1/pub/45-20-0001/452000012023002-eng.htm>

