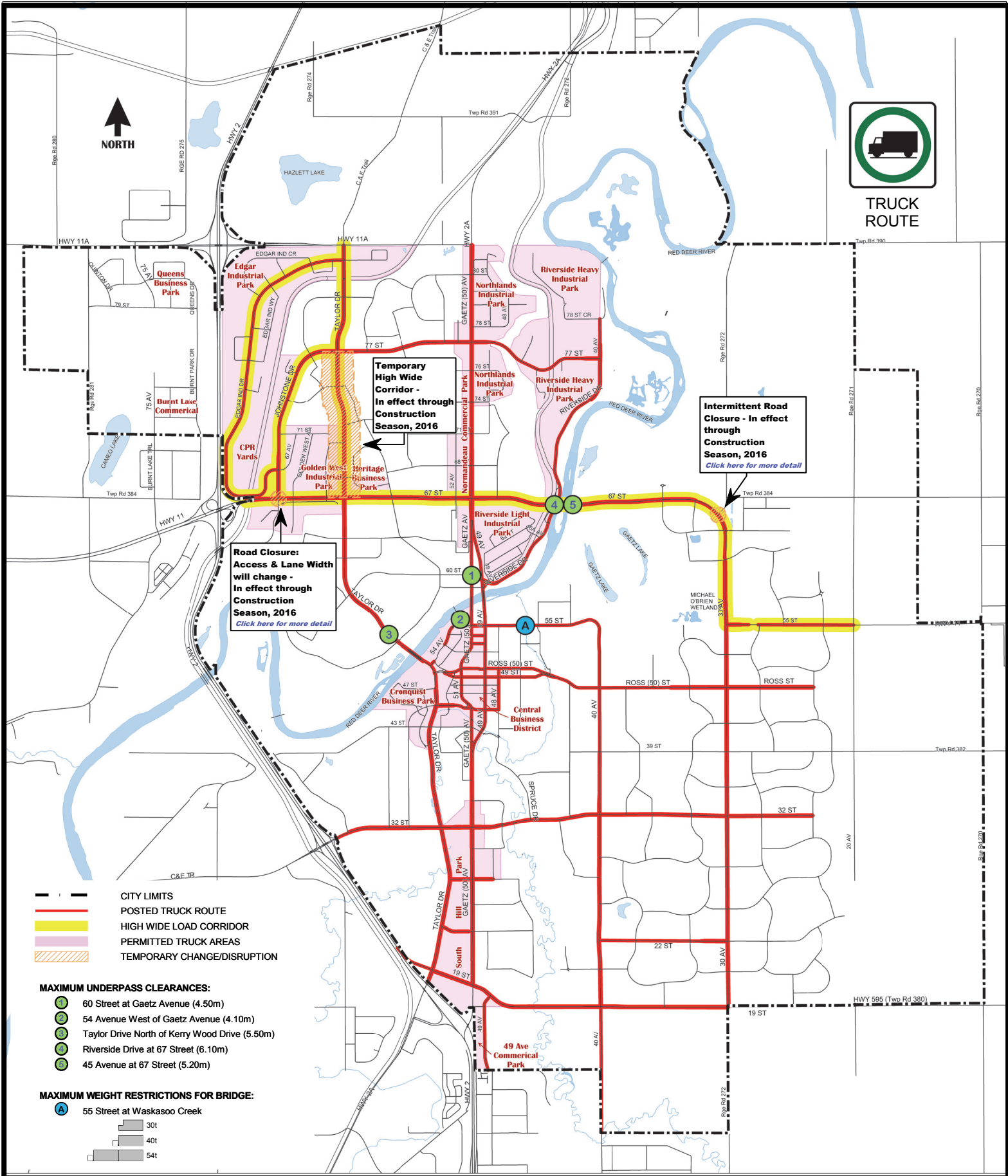




TRUCK ROUTE



Temporary High Wide Corridor - In effect through Construction Season, 2016

Intermittent Road Closure - In effect through Construction Season, 2016
[Click here for more detail](#)

Road Closure: Access & Lane Width will change - In effect through Construction Season, 2016
[Click here for more detail](#)

- CITY LIMITS
- POSTED TRUCK ROUTE
- HIGH WIDE LOAD CORRIDOR
- PERMITTED TRUCK AREAS
- TEMPORARY CHANGE/DISRUPTION

- MAXIMUM UNDERPASS CLEARANCES:**
- 60 Street at Gaetz Avenue (4.50m)
 - 54 Avenue West of Gaetz Avenue (4.10m)
 - Taylor Drive North of Kerry Wood Drive (5.50m)
 - Riverside Drive at 67 Street (6.10m)
 - 45 Avenue at 67 Street (5.20m)

- MAXIMUM WEIGHT RESTRICTIONS FOR BRIDGE:**
- 55 Street at Waskasoo Creek
- | | |
|--|-----|
| | 30t |
| | 40t |
| | 54t |

TRUCK ROUTES



NOTE:
Minimum traffic signal head height is 5.0 meters (16'5") on posted Truck Routes.
Truck Routes are in effect 24 hours a day.
High Wide Load Corridor is in effect between 5:00 am and 7:00 am, 7 days a week.

May, 2016
© Copyright The City of Red Deer
Engineering Services Department