

Land Use Bylaw 3357/2006



North

Scale 1:5,000

© The City of Red Deer



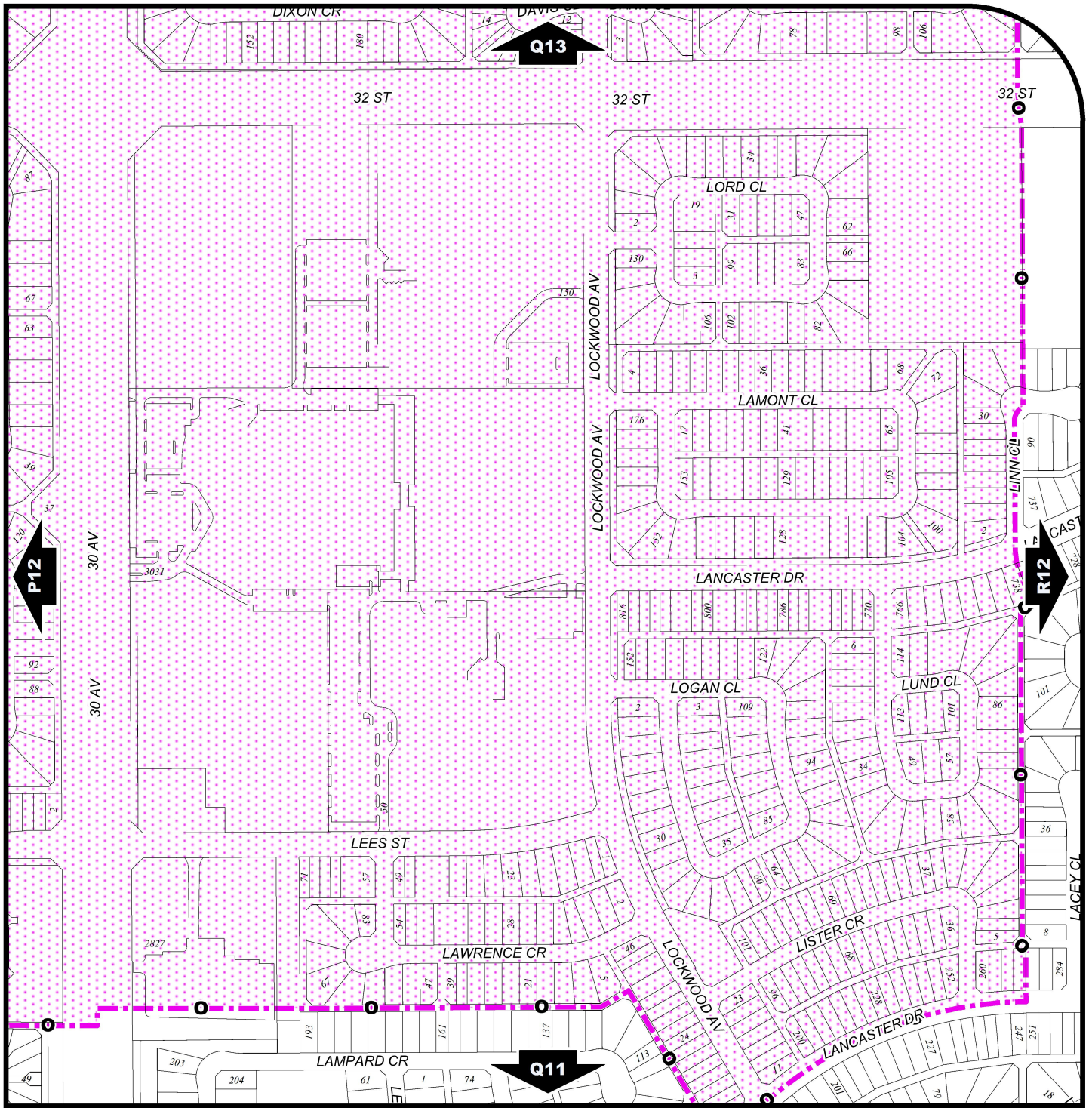
- | | | | |
|--------------|----------------------------|--------------|--------------------------------|
| | Land Use District Boundary | | Historical Preservation Sites |
| R1 | Land Use District | | Historically Significant Sites |
| | Exception to District | HP-32 | Historical Site Number |
| <i>e(ii)</i> | Exception Number | | City Boundary |
| ••• | Exempted from District | 123 | Civic Address |
| <i>2a</i> | Exempted Number | | Railway |
| V18 | Height Overlay District | | Proposed Lots |
| D95 | Density Overlay District | | |
| s | Secondary Suite Permitted | | |

Printed on 2018/05/28

Land Use Districts

Q12

SW¼ Sec11 38-27-W4



Land Use Bylaw 3357/2006



North

Scale 1:5,000

© The City of Red Deer



- Escarpment Area
- Flood Fringe
- Floodway
- Landfill Site (approximate)
- Landfill Setback
- Wastewater Treatment Plant Setback
- Major Entry Area
- Pipeline Setback
- AltaLink Consultation/Potential Constraints Area
- Overlay District

- Gaetz - Ross Heritage Area
- Subdivision Consideration
- Restricted Development Area
- Railway Setback (15m)
- Railway Setback (30m)
- Unknown Flood Risk
- Business Revitalization Zone
- Historical Preservation Sites
- Historically Significant Sites
- Historical Site Number

- Civic Address
- Railway
- Proposed Lots
- City Boundary

Printed on 2018/05/28

Land Use Constraints

Q12

SW¼ Sec11 38-27-W4