

Land Use Bylaw 3357/2006



North

Scale 1:5,000

© The City of Red Deer



	Land Use District Boundary		Historical Preservation Sites
<i>R1</i>	Land Use District		Historically Significant Sites
	Exception to District	<i>HP-32</i>	Historical Site Number
<i>e(ii)</i>	Exception Number		City Boundary
	Exempted from District	<i>123</i>	Civic Address
<i>2a</i>	Exempted Number		Railway
V18	Height Overlay District		Proposed Lots
D95	Density Overlay District		
s	Secondary Suite Permitted		

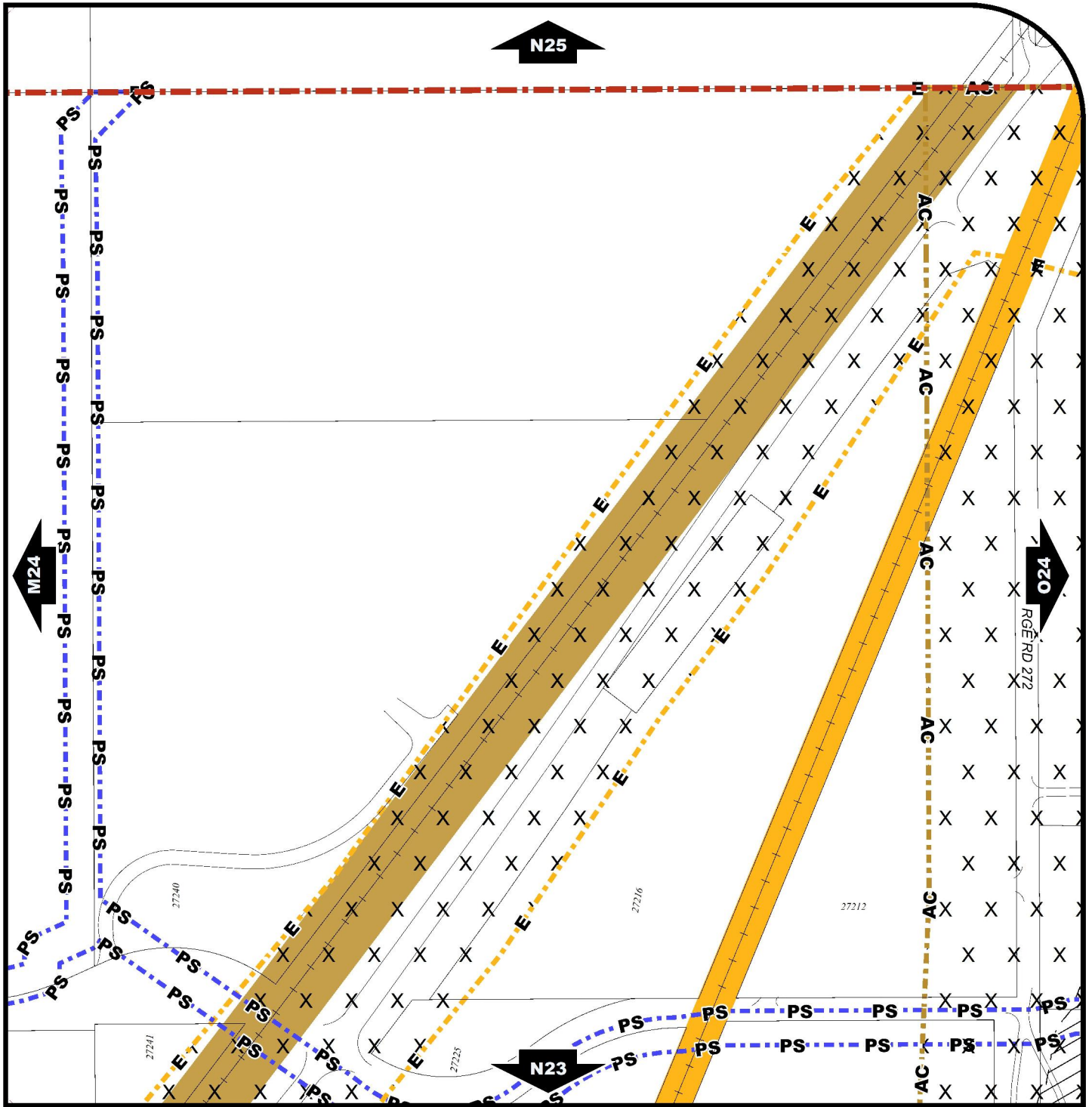
Printed on 2016/02/04

Land Use Districts

N24

SE¼ Sec10 39-27-W4

Refer to Constraints Map



Land Use Bylaw 3357/2006



North

Scale 1:5,000

© The City of Red Deer



	Escarpment Area		Gaetz - Ross Heritage Area		Proposed Lots
	Flood Fringe		Restricted Development Area		City Boundary
	Floodway		Railway Setback (15m)		
	Landfill Site (approximate)		Railway Setback (30m)		
	Landfill Setback		Business Improvement Area		
	Wastewater Treatment Plant Setback		Historical Preservation Sites		
	Major Entry Area		Historically Significant Sites		
	Pipeline Setback		Historical Site Number		
	AltaLink Consultation/Potential Constraints Area		Civic Address		
	Overlay District		Railway		

Printed on 2023/04/28

Land Use Constraints

N24

SE¼ Sec10 39-27-W4