

# Land Use Bylaw 3357/2006



North

Scale 1:5,000

© The City of Red Deer



- |  |                            |  |                                |
|--|----------------------------|--|--------------------------------|
|  | Land Use District Boundary |  | Historical Preservation Sites  |
|  | Land Use District          |  | Historically Significant Sites |
|  | Exception to District      |  | Historical Site Number         |
|  | Exception Number           |  | City Boundary                  |
|  | Exempted from District     |  | Civic Address                  |
|  | Exempted Number            |  | Railway                        |
|  | Height Overlay District    |  | Proposed Lots                  |
|  | Density Overlay District   |  |                                |
|  | Secondary Suite Permitted  |  |                                |

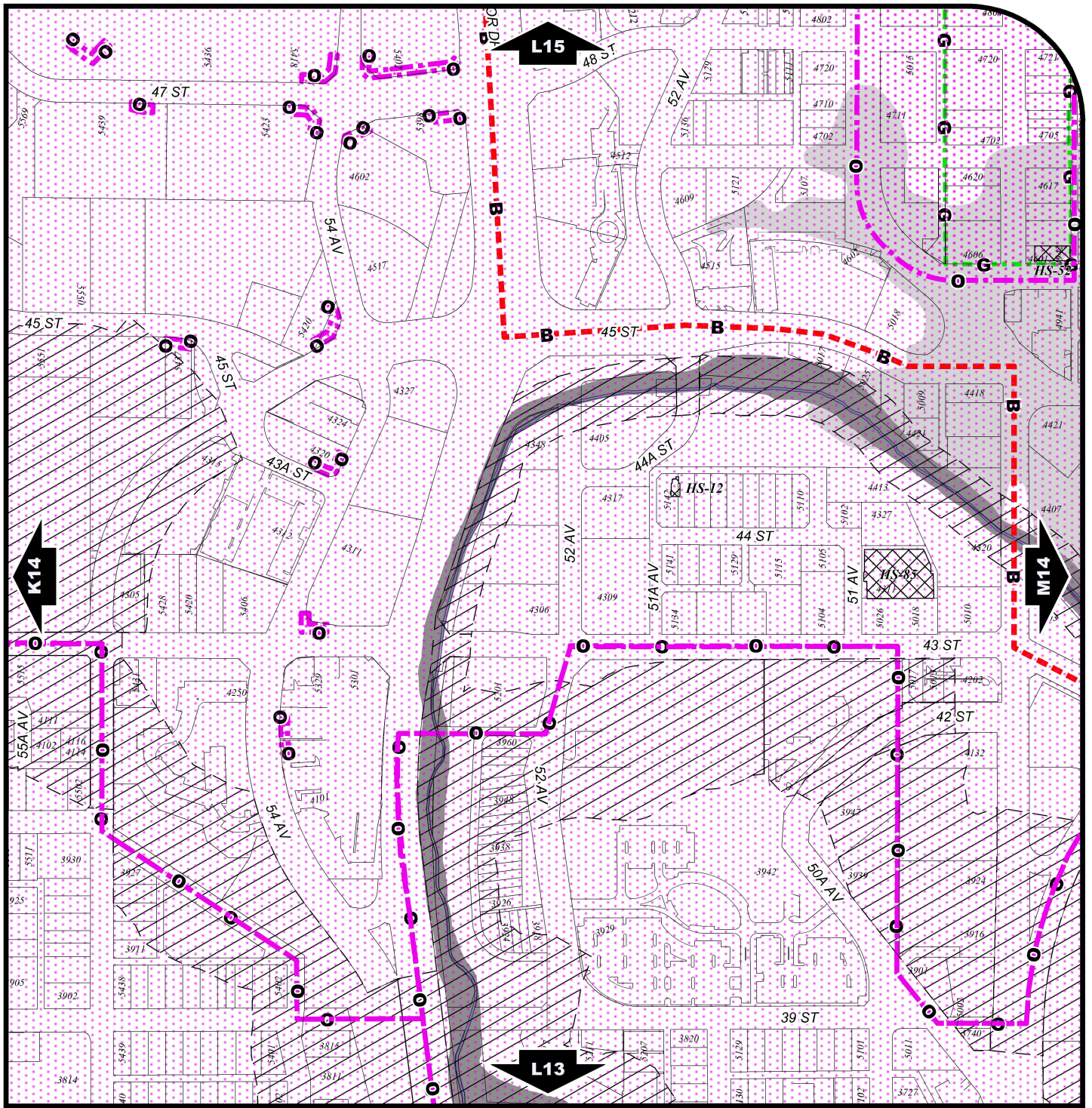
Printed on 2021/03/01

Land Use Districts

**L14**

SE¼ Sec17 38-27-W4

Refer to Constraints Map



# Land Use Bylaw 3357/2006



North  
Scale 1:5,000

© The City of Red Deer



- |  |                                |               |
|--|--------------------------------|---------------|
| Escarpment Area                                  | Gaetz - Ross Heritage Area     | Proposed Lots |
| Flood Fringe                                     | Restricted Development Area    | City Boundary |
| Floodway   | Railway Setback (15m)          |               |
| Landfill Site (approximate)                      | Railway Setback (30m)          |               |
| Landfill Setback                                 | Business Improvement Area      |               |
| Wastewater Treatment Plant Setback               | Historical Preservation Sites  |               |
| Major Entry Area                                 | Historically Significant Sites |               |
| Pipeline Setback                                 | Historical Site Number         |               |
| AltaLink Consultation/Potential Constraints Area | Civic Address                  |               |
| Overlay District                                 | Railway                        |               |

Printed on 2021/03/01

## Land Use Constraints

# L14

SE¼ Sec17 38-27-W4