

## Land Use Bylaw 3357/2006



North

Scale 1:5,000

© The City of Red Deer



	Land Use District Boundary		Historical Preservation Sites
<i>R1</i>	Land Use District		Historically Significant Sites
	Exception to District	<i>HP-32</i>	Historical Site Number
<i>e(ii)</i>	Exception Number		City Boundary
	Exempted from District	<i>123</i>	Civic Address
<i>2a</i>	Exempted Number		Railway
V18	Height Overlay District		Proposed Lots
D95	Density Overlay District		
s	Secondary Suite Permitted		

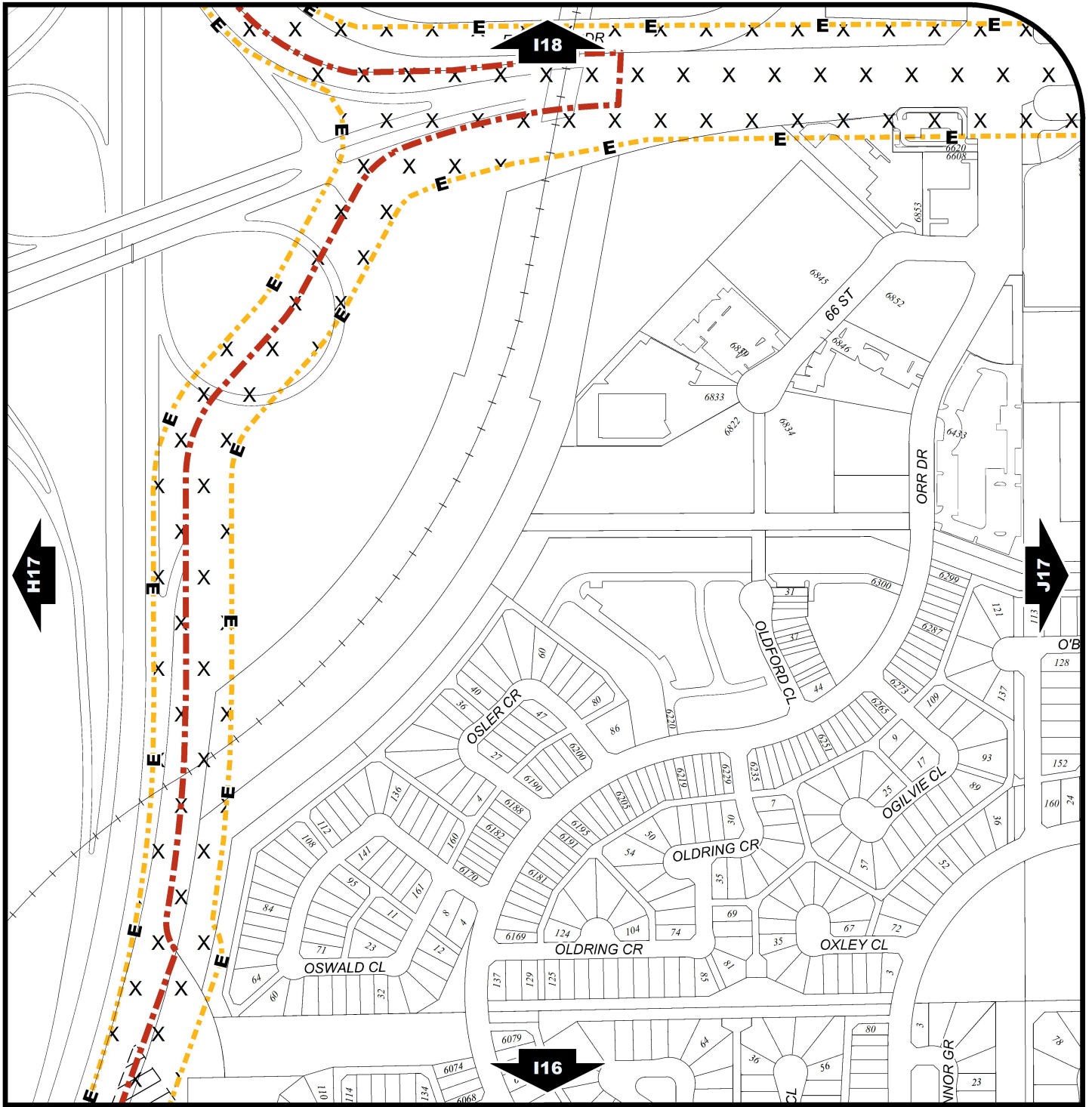
Printed on 2016/07/05

Land Use Districts

**I17**

NW¼ Sec19 38-27-W4

Refer to Constraints Map



# Land Use Bylaw 3357/2006



North

Scale 1:5,000

© The City of Red Deer



- |  |                                |               |
|--|--------------------------------|---------------|
| Escarpment Area                                  | Subdivision Consideration      | Railway       |
| Flood Fringe                                     | Restricted Development Area    | Proposed Lots |
| Floodway   | Railway Setback (15m)          | City Boundary |
| Landfill Site (approximate)                      | Railway Setback (30m)          |               |
| Landfill Setback                                 | Unknown Flood Risk             |               |
| Major Entry Area                                 | Business Revitalization Zone   |               |
| Pipeline Setback                                 | Historical Preservation Sites  |               |
| AltaLink Consultation/Potential Constraints Area | Historically Significant Sites |               |
| Overlay District                                 | Historical Site Number         |               |
| Gaetz - Ross Heritage Area                       | Civic Address                  |               |

Printed on 2016/07/04

## Land Use Constraints

# I17

NW¼ Sec19 38-27-W4